

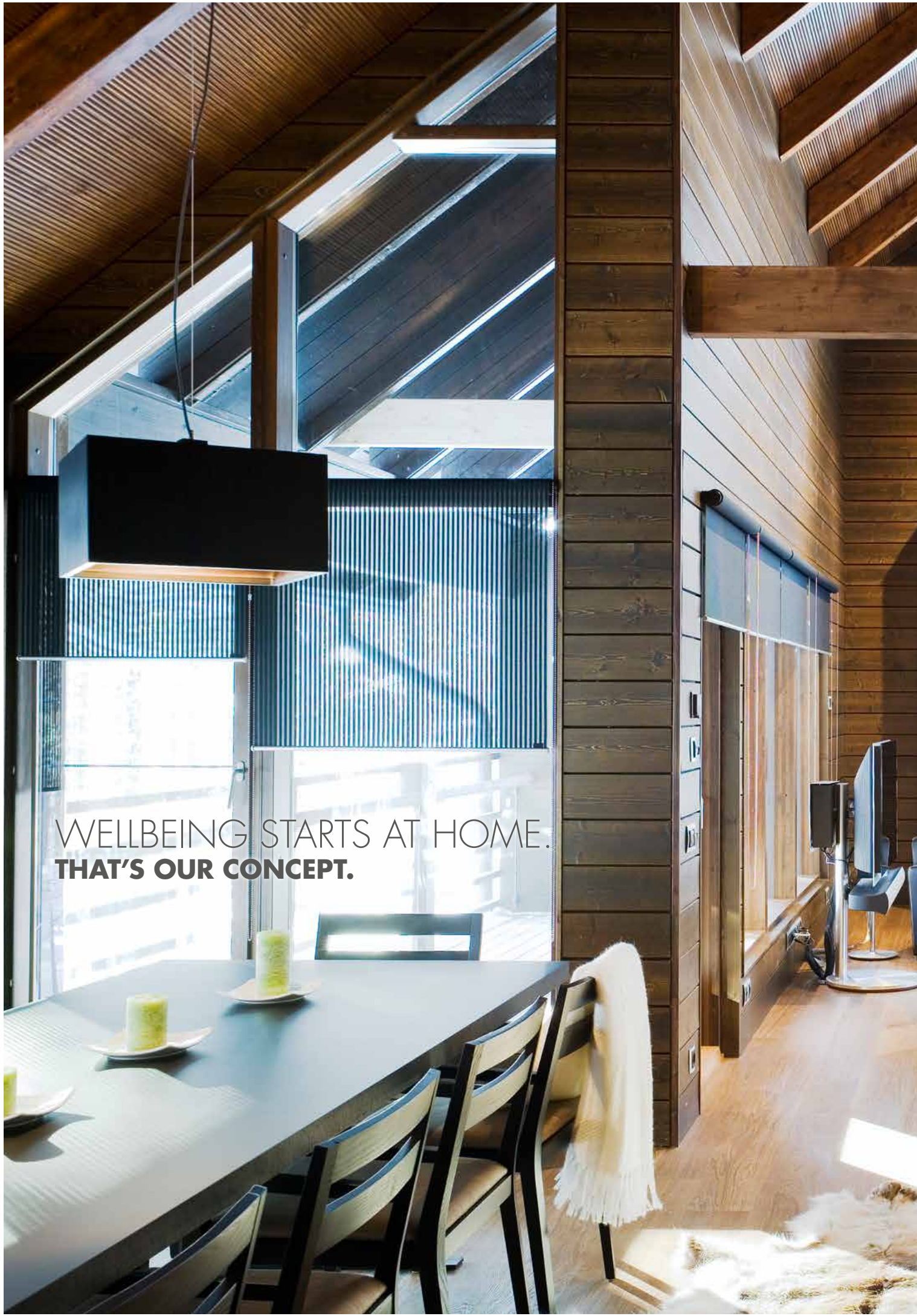


# HONKA LOG HOUSES

HOME OF PREMIUM LIVING









■ IT'S MORE THAN A HOUSE.  
IT'S A HOME.



MARKO SAARELAINEN  
CEO

"Honkarakenne Group is one of the world's leading companies in designing and crafting genuine massive wood homes under its Honka brand. Our knowledge is based on extensive experience in planning, producing and delivering genuine massive wood houses to more cultures than any other brand in the world."



■ SINCE 1958.  
**MADE TO LAST FOR GENERATIONS.**

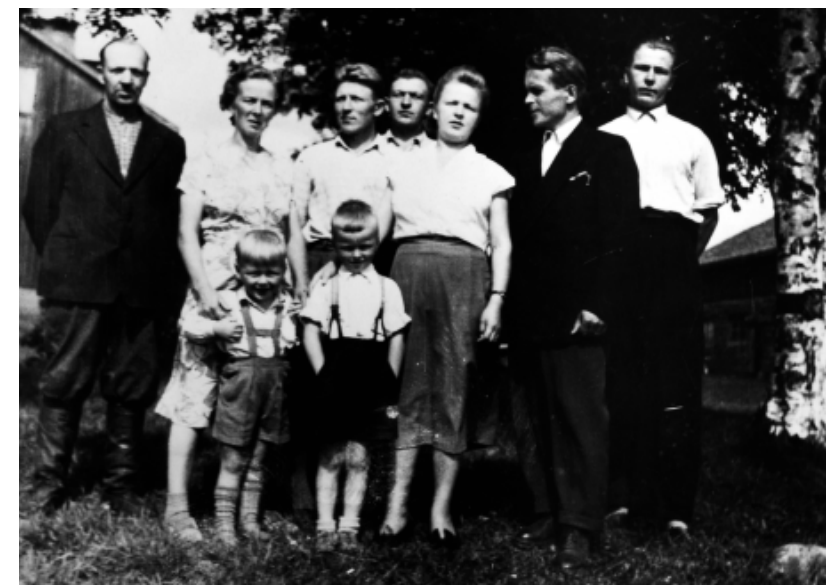
Honka was founded in 1958 in Eastern Finland, when five brothers became interested in building houses. In the 1960s, Honka's founders launched a revolutionary invention, an automated process for manufacturing wooden houses, which had previously been made mainly by hand and in small quantities. The invention was simple and brilliant, based on the Zetor tractor gearbox, and also made it possible to work the surface of the wood to create different styles.

In 1962, the factory made the first industrially produced log house in the world. Honka's idea of selling ready-made

houses as kits was so brilliant, and the architectural drawings and instructions so precise and convenient, that soon the company was dispatching its wooden houses to all corners of Finland.

Honka exported its first house to Great Britain in 1968. In 1972, Honka supplied 250 houses to Japan, marking the proper start of its international business. As of today, Honka has delivered over 85 000 buildings to over 50 countries all over the world.

*Saarelainen family - founders of HONKA brand*



*Honka made the first industrially produced log house in the world.*





## ■ WELLBEING FROM NATURE

A genuine Honka log house is a warm, inviting and healthy place to live. It's an ecological home that quite literally takes good care of the people who live within its walls.

Log, or solid wood, is one of the world's oldest, most widely used construction materials. Wood has been loved by people through the ages.

Using cutting-edge production technology, Honka processes the wood into the best possible construction material. Despite the high degree of processing, the dense and healthy log in the wall is still the same pine tree that has endured snow, rain and sun in a Finnish forest. The feeling you get when you walk through the doors of a log house is unique – warm, cosy and welcoming. Natural.

WE LOVE TREES,  
AND WE CARE ABOUT YOU.







## LIVING IN A LOG HOUSE **REDUCES STRESS**

A Honka home provides a truly healthy living environment with good indoor air quality, organic materials and maximised use of natural light. It has been scientifically proven that solid wood structures lower heart rate and reduce stress like walking in the woods. Solid wood also has excellent acoustic properties, absorbing sounds and creating a calming and cosy atmosphere.



## ■ A HEALTHY HOME FOR YOUR FAMILY

The optimal indoor air humidity for good health is between 30 and 55 per cent. At this humidity level, the air is easy to breathe and the growth of mould and bacteria is minimised. This helps to prevent allergies and respiratory infections.

Log buildings promote good health naturally, thanks to their superior air quality. According to an extensive European study, the more massive wood there is inside a house, the healthier the air quality becomes. Massive wood has the unique ability to absorb moisture and release it back into the air in the room when it has dried.

All technical solutions used in Honka homes are structurally safe and extensively tested. Our houses are some of the most air and watertight on the market, which allows them to stand the test of time, in all weather conditions. Our patented and design-protected innovations help make sure every Honka house is a warm and healthy home for generations to come.

Thanks to our extensive experience and active research and development, we have the knowledge needed to build houses for sensitive groups such as children and adults suffering from breathing problems, allergies or asthma.

### NATURALLY OPTIMAL AIR HUMIDITY

Massive wood has the unique ability to absorb moisture and release it back into the air in the room when it has dried.

#### TOO DRY AIR:

bacteria, viruses, allergy and asthma, respiratory tract infections and ozone formation



#### TOO HUMID AIR:

bacteria, viruses, fungus, acarina, allergy and asthma and chemical reactions

Reference: Simonson, Salonvaara, Ojanen: *Improving Indoor Climate and Comfort with Wooden Structures*. VTT Publications, 2001.

"The number one reason for choosing a Honka house was to have a healthy home for our family which suffers from allergies and asthma. We already have experience of a poorly built house – we definitely didn't need another one."

*Marjo Rönnkvist, a mother of three.*





## ■ AN ECOLOGICALLY SOUND CHOICE

In Finland, the natural growth of forests far exceeds the number of trees cut down. The PEFC certification guarantees that Honka's raw material originates from certified Finnish forests. We never buy wood from protected regions. Our operations are certified in accordance with the ISO 14001 environmental standard.

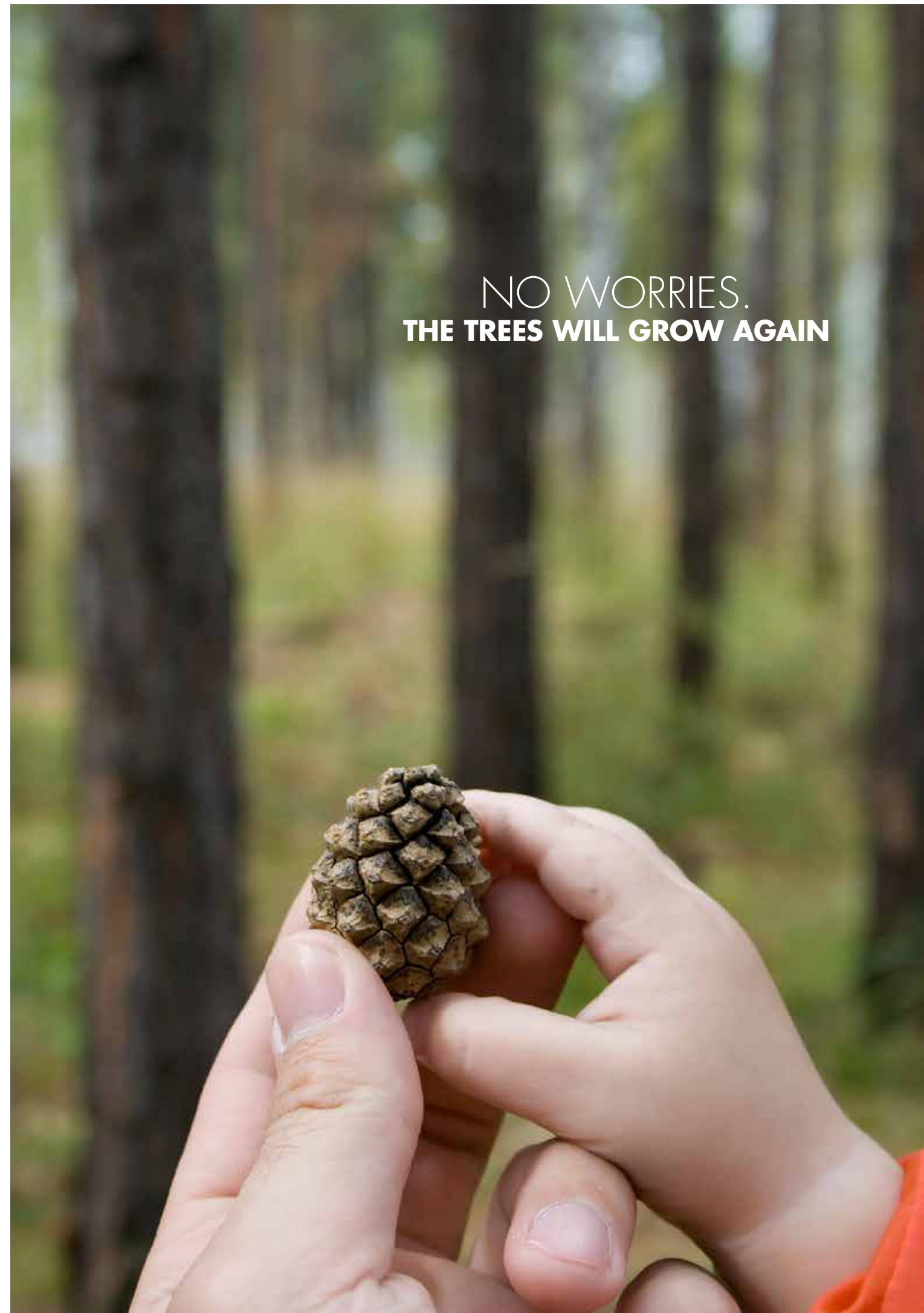
The environmental friendliness of wood as a construction material is indisputable. The amount of energy consumed in the industrial production of massive wood is approximately only 50 per cent of the energy required for cement production and 20 per cent of that required for brick production. Our operations are certified in accordance with the ISO 14000 environmental standard.

Solid logs are also natural energy conservationists. They absorb and retain heat, and release it back into the air when necessary. Add Honka's patented, design-protected technical innovations guaranteeing the excellent air-tightness of our houses and the best windows and doors on the market, and you've got a well-insulated, energy-efficient log house that will keep you warm in the winter and cool in the summer.

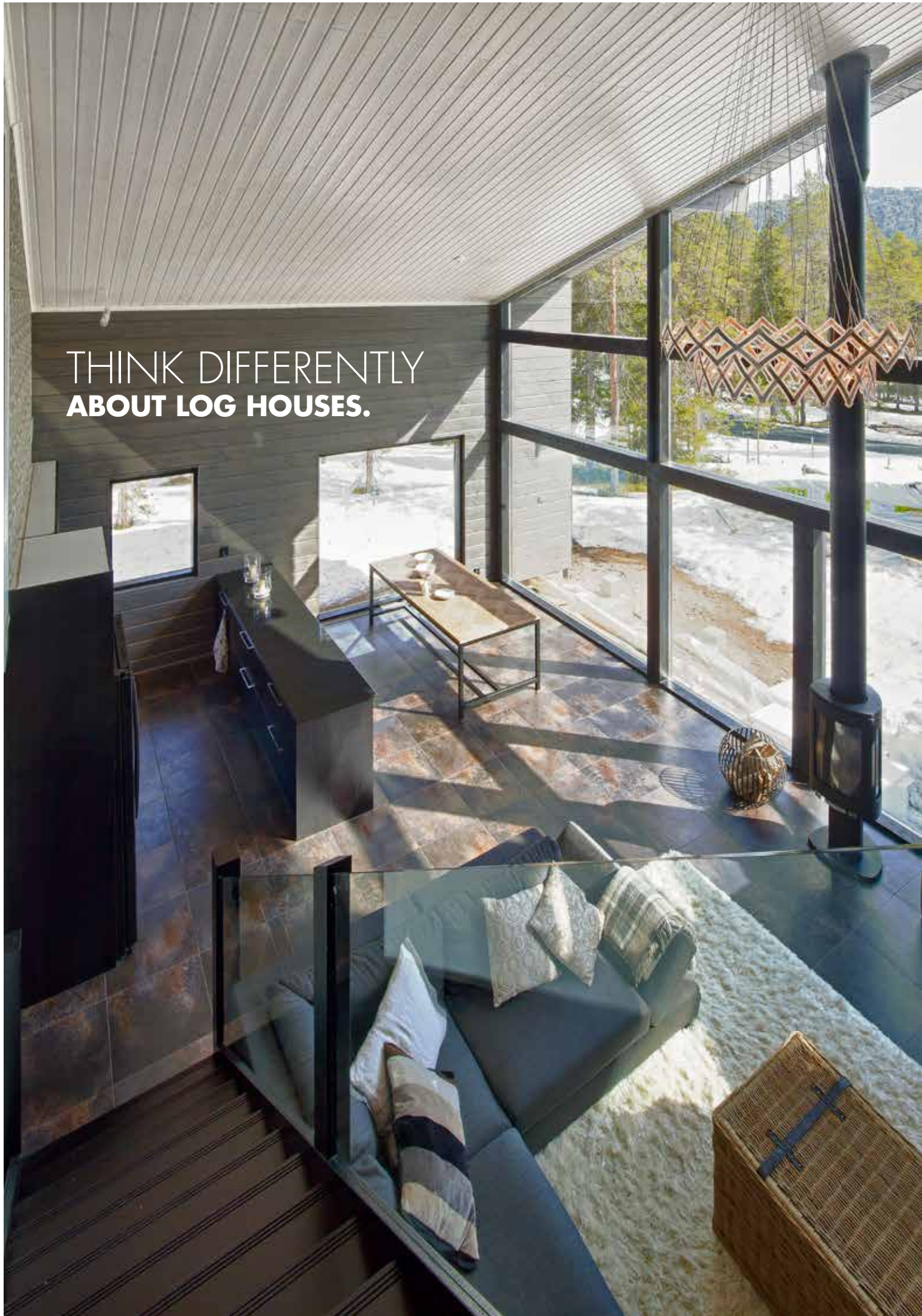
### MORE THAN **70 %** OF FINLAND'S LAND AREA IS COVERED WITH FOREST

One of the greatest things about Finland is its abundance of trees. In fact, more wood grows in Finnish forests than is harvested. Using renewable Finnish wood as a construction material is an ecological choice in the battle against climate change.

NO WORRIES.  
THE TREES WILL GROW AGAIN







THINK DIFFERENTLY  
ABOUT LOG HOUSES.

## ■ HONKA **FUSION**<sup>TM</sup> AND THE FREEDOM OF DESIGN

As a natural material, wood changes over the course of time. As wood dries, it shrinks, causing a log house to settle. This is a natural phenomenon, and even though designers with expertise in log home planning can meet the challenges, it still used to set some limitations for the architects.

Our innovation, the non-settling Honka Fusion<sup>TM</sup> log, allows all the excellent properties of a traditional log house to be incorporated into modern urban living. Counting out the limitations of settling, more versatile architecture can be achieved.

For example, log walls can include a large surface area of window, with modern, light mouldings, free of the wide architraves and settling spaces of traditional log construction. Logs can easily be combined with other materials too, like stone, plastering and steel. Also, the traditional cross corners can be substituted with regular outer corners. Your family will still benefit from the best qualities of a log house, such as longevity and healthy indoor air.



The Honka Fusion solution is based on minimising the effects of settling using vertical middle layers of laminated logs.



Large windows can be included in log walls with modern, light mouldings



The walls of a zero-corner house appear to be panelled due to the even layering and regular outer corner





## ■ A **SAFE HOME** FOR DECADES TO COME

The life span of massive wood houses is very long. A wooden building may last for hundreds of years when it has been designed and built correctly to protect it from humidity and extreme weather conditions. Honka has unrivalled expertise based on years of research and testing and supplying over 85,000 log buildings worldwide.

Because Finnish pine grows slowly, its wood is exceptionally hard, particularly the heartwood. Pine can withstand changes in humidity without cracking, which makes it the best possible building material for log houses. All of the wood used in the production of Honka houses has to pass our strict quality control standards. Only the very best wood sourced from lush, healthy, well-cared-for forests will do.

The quality of everything Honka does is based on generations of knowhow, ongoing development and independent testing. The results are indisputable. We're proud to say that we make some of the most air-tight, water-tight, fire and earth-quake resistant homes on the market.

The better the air-tightness of the house, the more energy efficient it is. Our precision-machined timber with built-in

seals yields very tight fitting joints, and hence air-tight walls. With improved air-tightness, you can enjoy lower energy bills.

Water-tightness also plays an important role by keeping wall structures safe from water damage. Honka houses are insulated at the factory with double sealing tape. This keeps them well insulated, decreases the possibility of on-site sealing errors and helps accelerate construction. Various country-specific requirements, for example those related to loading and heat insulation, are also taken into consideration.

Honka is the first log house manufacturer in the world to gain the right to use the CE certification mark in accordance with ETA (European Technical Approval). The CE mark indicates that a product meets the requirements of the EU's building product directive. The CE mark means Honka house kits can be freely transported to 31 European countries. Honka also has the ISO 9001 quality certificate.

Upon completion, each and every Honka house is fitted with an Original Honka plaque. This little plaque guarantees the quality and authenticity of your Honka home.



# HONKA LOG THE HEART OF YOUR HOME







## ■ CONTEMPORARY COLLECTION

Timber is increasingly used in constructing contemporary, Nordic style houses for healthy and ecological living. Solid wood or log is used as the load-bearing structure for all Honka homes. In Honka Fusion homes, façade walls may also combine many other materials, such as steel, glass or stone. Living in a genuine Honka log home creates a feeling of every-day luxury: it is an emotionally inspiring living environment that emphasizes wellbeing in all aspects. It also saves energy and advances sustainable development.

|                |    |
|----------------|----|
| Linssi.....    | 20 |
| Pino.....      | 22 |
| Apollo.....    | 24 |
| Harmonia.....  | 26 |
| Mambo.....     | 28 |
| Tango.....     | 30 |
| Myrsky.....    | 32 |
| Harjanne.....  | 34 |
| Sirius.....    | 36 |
| Kommodori..... | 38 |
| Kide.....      | 40 |





# LINSSI



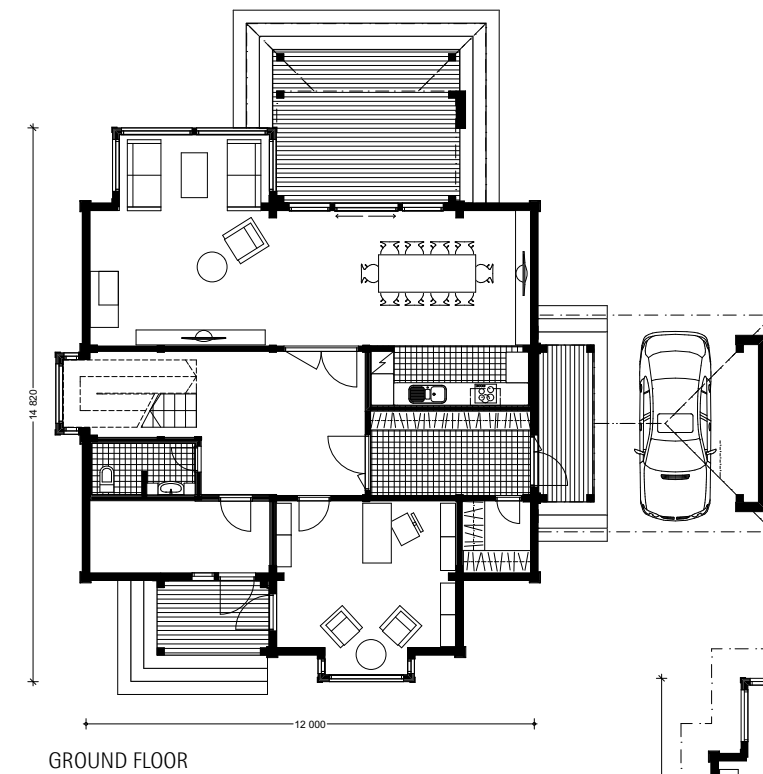
## LINSSI

Linssi is a modern, new-generation log home. Its architecture reflects the latest trends in European design, while the house itself still has all the benefits of a traditional log house.

The angular exterior is combined with large windows and beautiful, natural wooden surfaces. The kitchen and the living room are downstairs, and the first floor is reserved for the bedrooms.

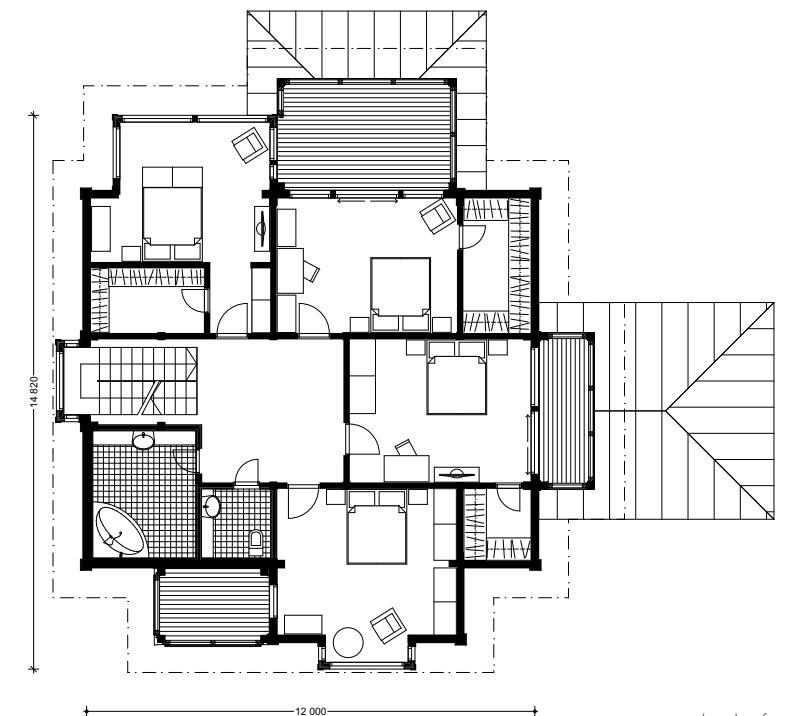
The series includes models of different sizes, with many layout options to meet the needs of different families.

The Nova collection is designed by architect Alexey Skoldinov.



**LINSSI**  
LIVING AREA 264 m<sup>2</sup>  
TERRACES 60 m<sup>2</sup>  
TOTAL AREA 324 m<sup>2</sup>  
Doc id: 24266

FIRST FLOOR



### CUSTOMISE THIS DESIGN

The designs are available in a range of sizes and layouts that can be adjusted according to your individual needs. See more on

**[www.honka.com](http://www.honka.com)**





# PINO



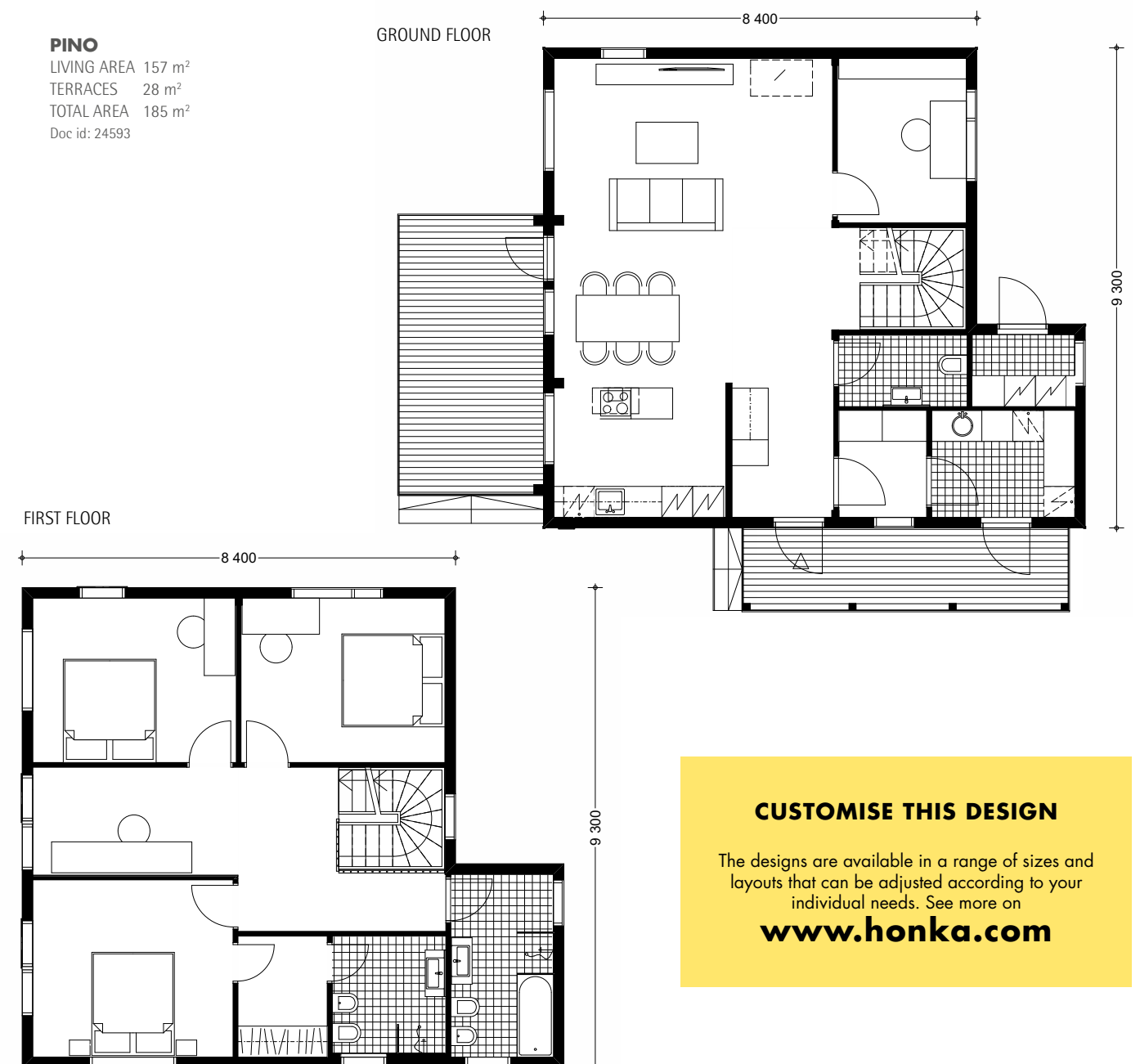
HONKA  
CONTEMPORARY

## PINO

Pino is an urban home that takes its architectural cues from notions of simplicity and clarity. The well-defined lines and modern look lend the house a unique and distinctive air, while the pared-down style leaves plenty of room for your own vision. The highly space-efficient square layout works well, even on smaller sites.

The large windows start at floor level and bring in plenty of light and a wonderful sense of space. If desired, PINO is also available in part-rendered finish. You can also choose between a single-storey and a two-storey version.

**PINO**  
LIVING AREA 157 m<sup>2</sup>  
TERRACES 28 m<sup>2</sup>  
TOTAL AREA 185 m<sup>2</sup>  
Doc id: 24593



### CUSTOMISE THIS DESIGN

The designs are available in a range of sizes and layouts that can be adjusted according to your individual needs. See more on

[www.honka.com](http://www.honka.com)



# APOLLO



## APOLLO

The large window surfaces, partially shielded by wooden lattice-work give structure to the Apollo facade, interspersed with sections of massive wood and render. Adjusting the layout is easy: the kitchen, dining and living areas are located in the centre of the house, opening up in two directions across the interior, and you can adapt the floor area allocation to suit your own personal requirements. One end of the house is dedicated to bedrooms, while the other houses the sauna and utility room. A large skylight allows light to flood into the covered atrium.

### CUSTOMISE THIS DESIGN

The designs are available in a range of sizes and layouts that can be adjusted according to your individual needs. See more on

[www.honka.com](http://www.honka.com)

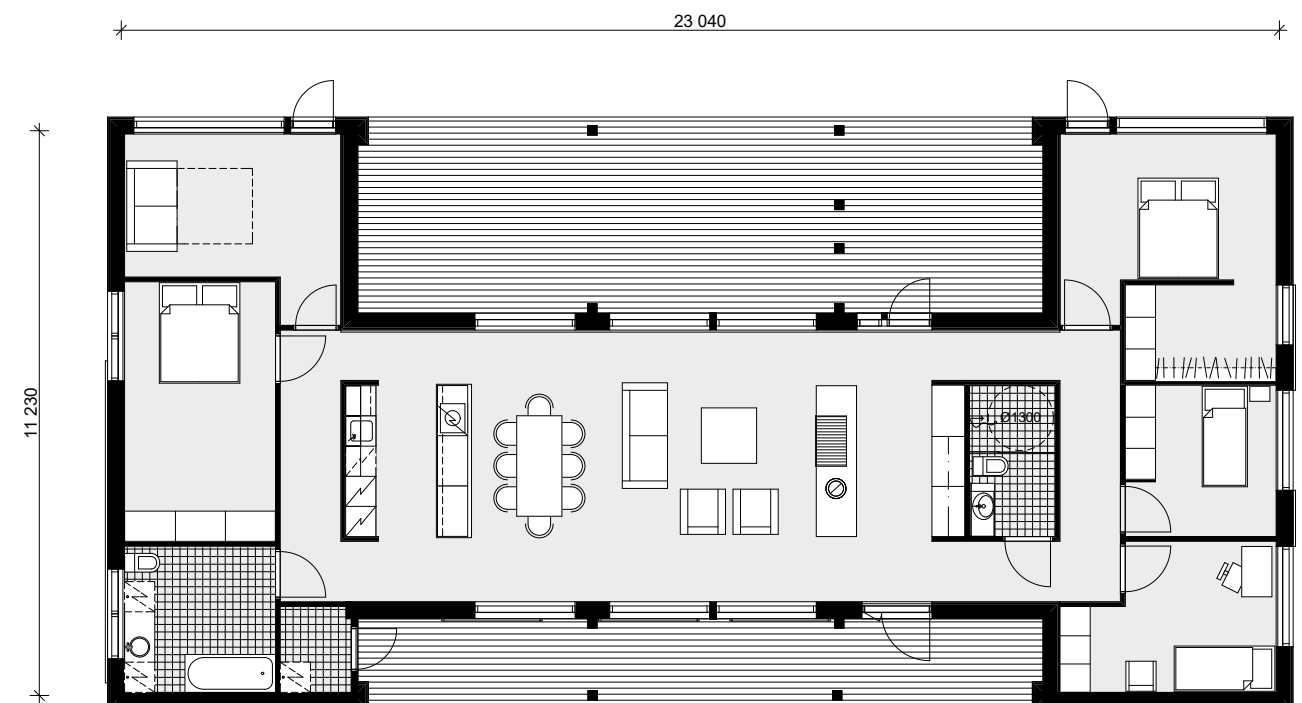
#### APOLLO

LIVING AREA 173 m<sup>2</sup>

TERRACES 77 m<sup>2</sup>

TOTAL AREA 200 m<sup>2</sup>

Doc id: 24594







# HARMONIA

Harmonia is a modern, massive wood home for urban dwellers. The minimalistic architecture, large windows and authentic wooden surfaces give this home its cosy and harmonious atmosphere.

In two-storey Harmonia houses, the kitchen and the living rooms are located downstairs and the bedrooms upstairs. The master bedroom on the first floor adjoins a balcony, which is the perfect place for enjoying the first rays of sunlight in the morning.

The Harmonia product family also includes one-storey models. The house can be equipped with a monopitch, gambrel or gabled roof.



See floor plans for 1-storey Harmonia on [Honka.com](http://Honka.com)

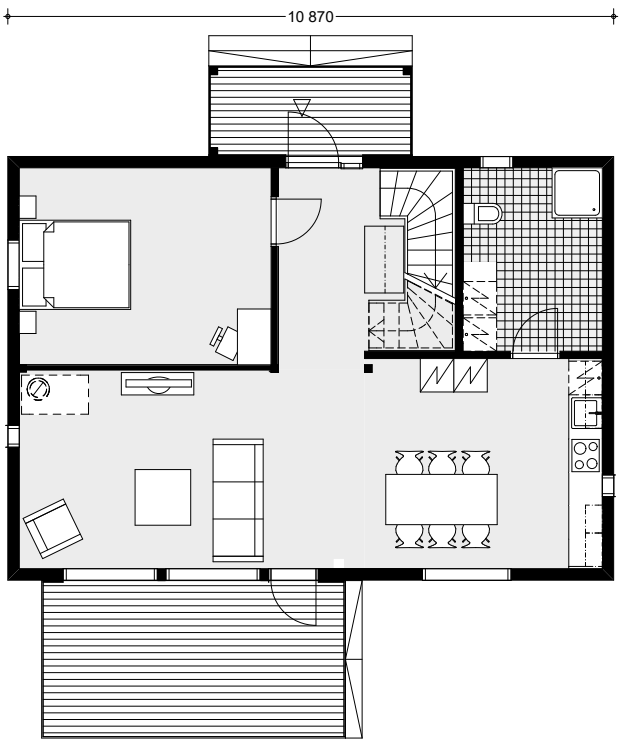
## CUSTOMISE THIS DESIGN

The designs are available in a range of sizes and layouts that can be adjusted according to your individual needs. See more on

[www.honka.com](http://www.honka.com)



GROUND FLOOR



FIRST FLOOR



**HARMONIA**  
LIVING AREA 150 m<sup>2</sup>  
TERRACES 35 m<sup>2</sup>  
TOTAL AREA 185 m<sup>2</sup>  
Doc id: 24264



# MAMBO

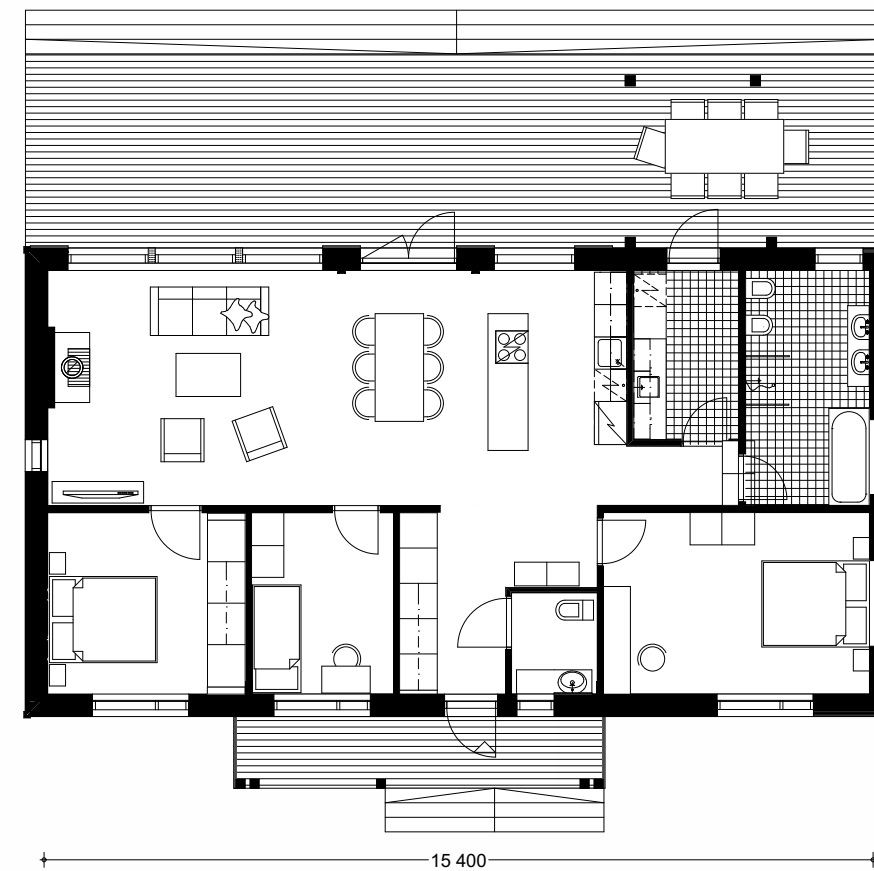


## MAMBO

Mambo is a stylish and popular detached home, with large windows and a modern mono-pitch roof to give it a distinctive appearance. The living area provides direct access into the garden, while the large windows ensure that the space is wonderfully light. A number of layout alternatives are available. A separate sauna building, complete with overnight facilities for guests, brings a touch of luxury to your daily life.

### CUSTOMISE THIS DESIGN

The designs are available in a range of sizes and layouts that can be adjusted according to your individual needs. See more on [www.honka.com](http://www.honka.com)



**MAMBO**  
LIVING AREA 120 m<sup>2</sup>  
TERRACES 65 m<sup>2</sup>  
TOTAL AREA 185 m<sup>2</sup>  
Doc id: 24595





TANGO

HONKA  
CONTEMPORARY

## TANGO

Tango is a genuine Honka Fusion home, offering the finest combination of minimalist finishes and a range of building materials, including massive wood and large glass surfaces. The front elevation is available in part-render, if desired. The windows, entrances and rooms face out in three directions, allowing Tango to be placed right at the perimeter of your site. This design means that you can maximise the size of your outdoor space. The master bedroom provides access to a porch area, where you can greet the morning before moving downstairs into the shared areas.

### CUSTOMISE THIS DESIGN

The designs are available in a range of sizes and layouts that can be adjusted according to your individual needs. See more on

[www.honka.com](http://www.honka.com)

#### TANGO

LIVING AREA 191,5 m<sup>2</sup>

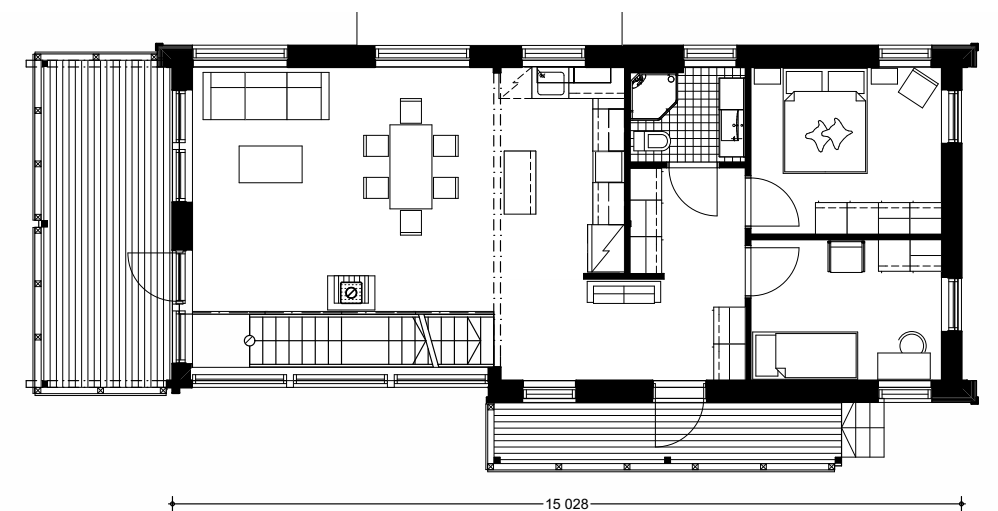
TERRACES 57,8 m<sup>2</sup>

TOTAL AREA 249,3 m<sup>2</sup>

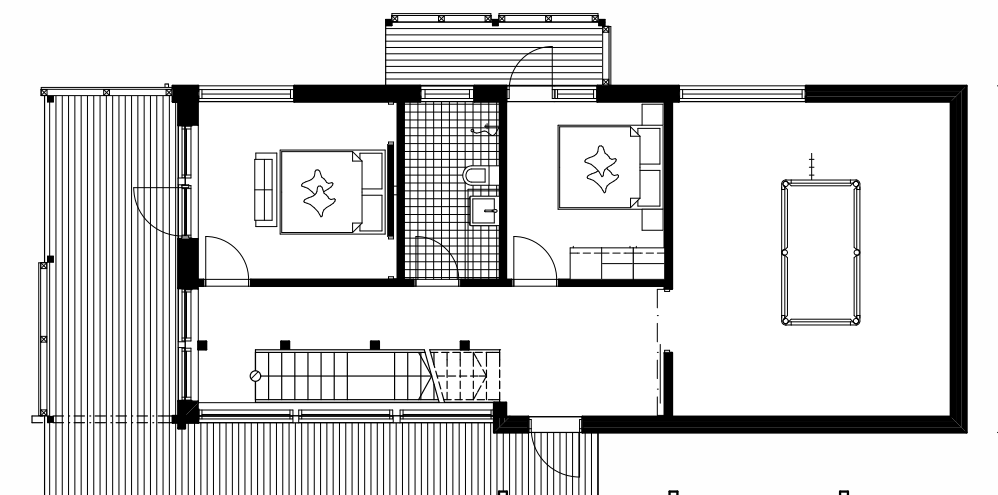
Doc id: 24596



FIRST FLOOR



GROUND FLOOR







## MYRSKY

Myrsky is a modern, Scandinavian model that is at home both in densely populated urban areas and deep in the countryside.

The design is slightly simpler than the Louna, but the two models have similar layouts.

The Myrsky product family has one or one and a half storey models and the mezzanine can be turned into residential space as the family gets bigger.



### CUSTOMISE THIS DESIGN

The designs are available in a range of sizes and layouts that can be adjusted according to your individual needs. See more on

[www.honka.com](http://www.honka.com)

### MYRSKY

LIVING AREA 96 m<sup>2</sup>  
TERRACES 21 m<sup>2</sup>  
TOTAL AREA 117 m<sup>2</sup>  
Doc id: 24262



### MYRSKY

LIVING AREA 110 m<sup>2</sup>  
TERRACES 21 m<sup>2</sup>  
TOTAL AREA 131 m<sup>2</sup>  
Doc id: 24599





# HARJANNE



## HARJANNE

Harjanne is a welcoming and approachable log-house design. The layout is based on a highly popular design, with bedrooms off the combined kitchen and living space in the middle. In fact, Harjanne is deceptively spacious and offers a variety of layout options, created with the needs of different types of families in mind.

### CUSTOMISE THIS DESIGN

The designs are available in a range of sizes and layouts that can be adjusted according to your individual needs. See more on

[www.honka.com](http://www.honka.com)



**HARJANNE**  
LIVING AREA 129 m<sup>2</sup>  
TERRACES 39 m<sup>2</sup>  
TOTAL AREA 168 m<sup>2</sup>  
Doc id: 24606



# SIRIUS



HONKA  
CONTEMPORARY

## SIRIUS

The latest, brightest star in the Honka collection is the stylish Sirius, built using non-settling Honka Fusion logs and featuring a front elevation made entirely of glass. In this truly exceptional holiday home, nature is an ever-present feature of your interior living environment throughout the year, bringing the green lushness of summer, the dazzling colours of autumn and the star-lit night skies of winter into your home.

The kitchen, dining and living areas form an airy and flowing space, the ideal spot for enjoying the scenery around you. Thanks to the generous ceiling height, this holiday home feels wonderfully spacious at all times.

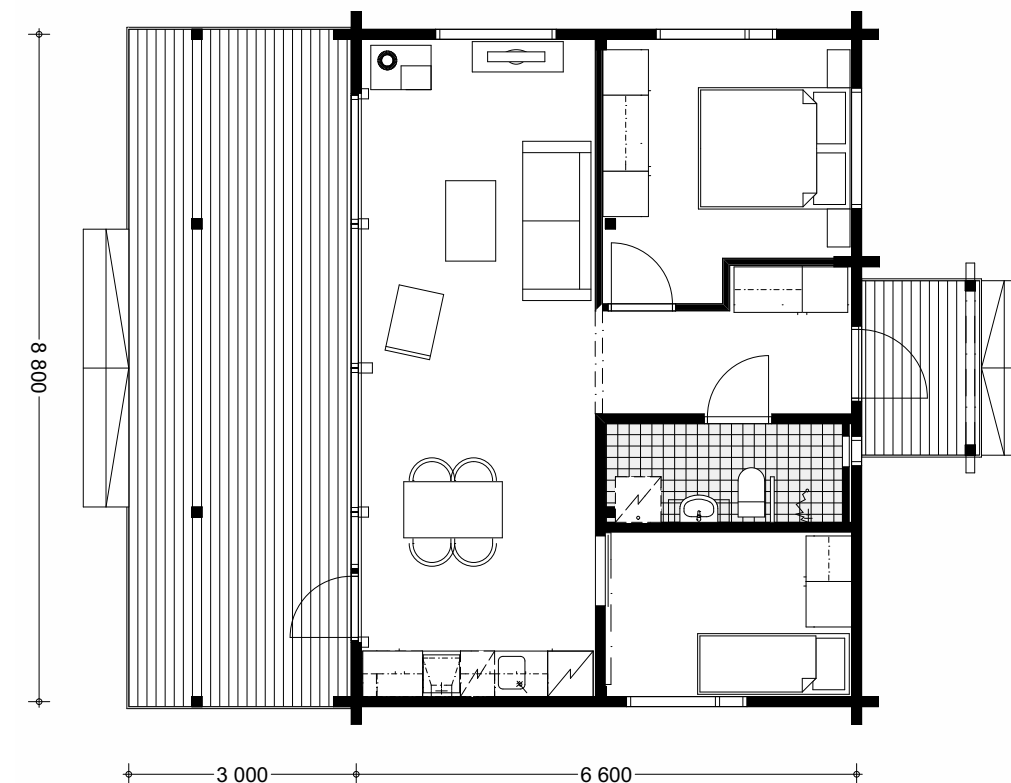


*Sirius can be combined with sauna cabin Kuu. See more on Honka.com.*

### CUSTOMISE THIS DESIGN

The designs are available in a range of sizes and layouts that can be adjusted according to your individual needs. See more on

**www.honka.com**



### SIRIUS

LIVING AREA 56 m<sup>2</sup>  
TERRACES 30 m<sup>2</sup>  
TOTAL AREA 86 m<sup>2</sup>  
Doc id: 24601



# KOMMODORI

HONKA  
CONTEMPORARY

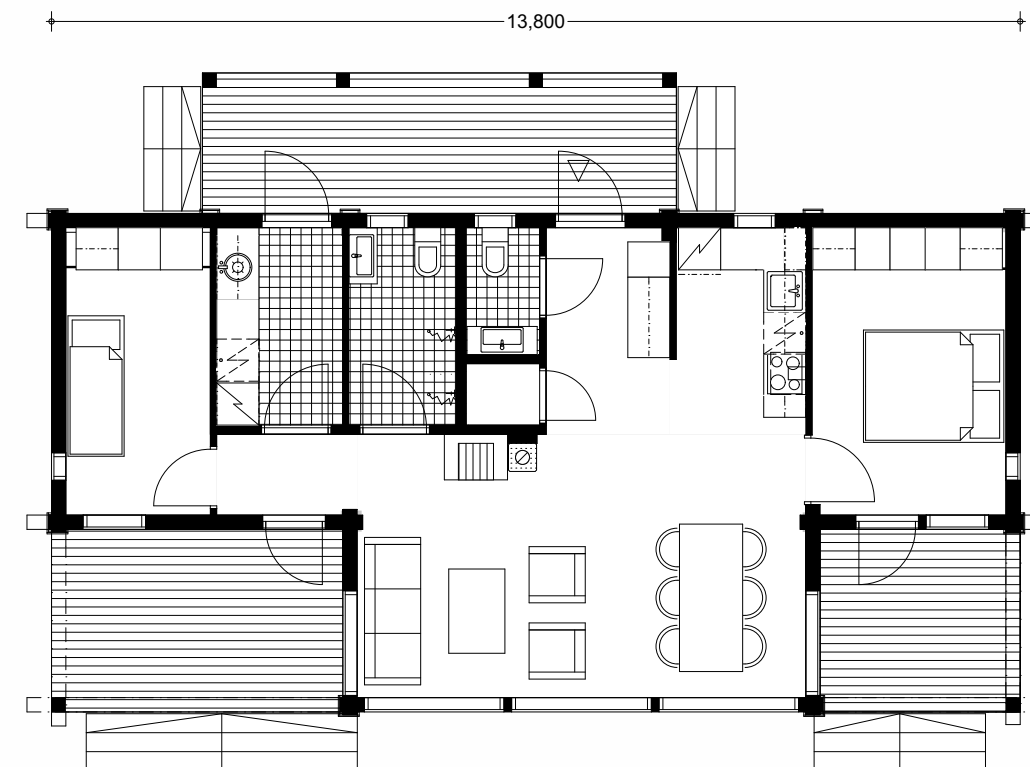
## KOMMODORI

Do you dream of a place where you can stop and relax? Kommodori is a series of holiday homes in various sizes with simple Scandinavian architecture and a feature glazed wall to take advantage of the views beyond. What better than to sit overlooking the sea, or across open countryside and at the same time know that the building you are viewing this from is keeping you healthy, naturally. It is a well known fact that living and staying in a timber home helps to make you more relaxed, so what more could you wish for from your new holiday home?

### CUSTOMISE THIS DESIGN

The designs are available in a range of sizes and layouts that can be adjusted according to your individual needs. See more on

**[www.honka.com](http://www.honka.com)**



**KOMMODORI**  
LIVING AREA 71 m<sup>2</sup>  
TERRACES 32 m<sup>2</sup>  
TOTAL AREA 103 m<sup>2</sup>  
Doc id: 24268



# KIDE



## KIDE

The Scandinavian and linear Kide showcases the mindset of the Finnish sauna.

There is a covered veranda between the sauna and the house, and it can be used for a variety of functions. In the summer, it is turned into a dining area or kitchen, and the fireplace makes it a cosy space even when the weather gets chilly. The house that is detached from the sauna stays nice and cool for recreation and sleep.

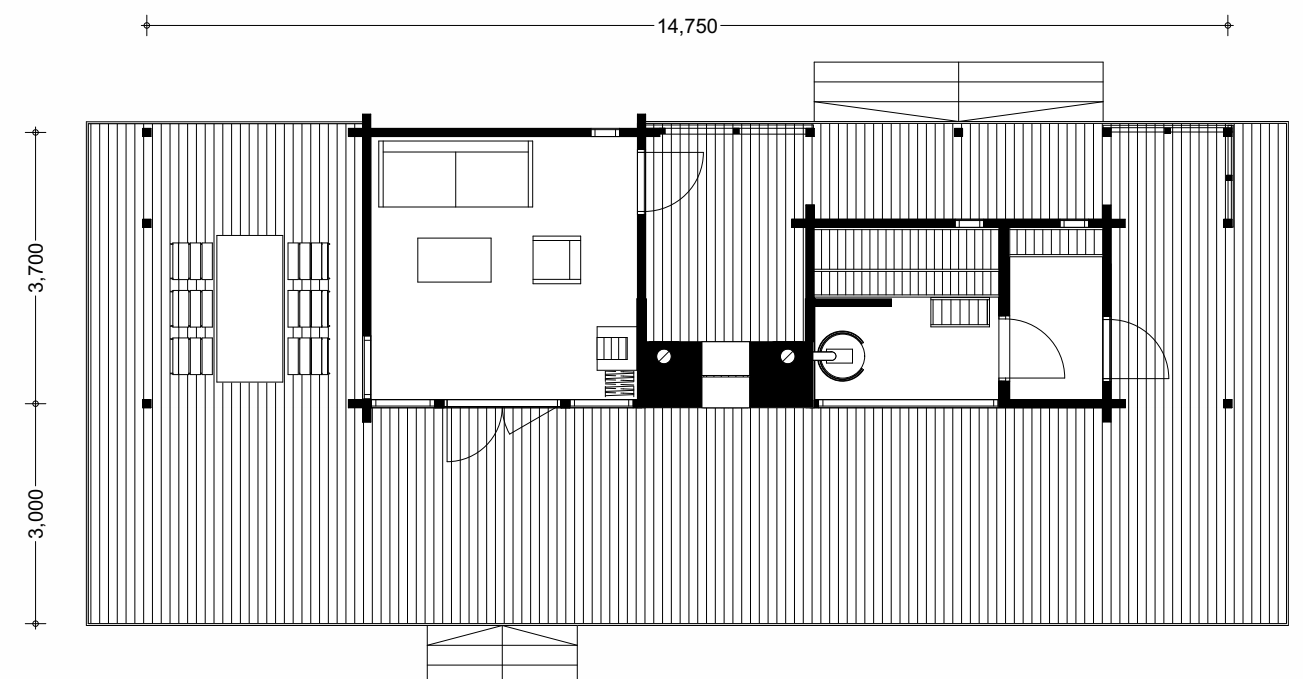
We have created many different versions of this popular sauna, and you can use them as the basis of your own Kide recreational ideas

### CUSTOMISE THIS DESIGN

The designs are available in a range of sizes and layouts that can be adjusted according to your individual needs. See more on

**[www.honka.com](http://www.honka.com)**

**KIDE**  
LIVING AREA 22 m<sup>2</sup>  
TERRACES 84 m<sup>2</sup>  
TOTAL AREA 106 m<sup>2</sup>  
Doc id: 24600







# ■ TRADITIONAL COLLECTION

Log, or solid wood, is one of the world's oldest, most widely used construction materials. Wood has been loved by people through the ages. Our Classic Collection builds on the years of tradition, bringing it to meet the requirements of today's lifestyles. A genuine Honka log home provides a cosy and inspiring living environment, with natural building materials, good indoor air quality and a calming, stress-reducing atmosphere. It is an ecological home that quite literally takes good care of the people who live within its walls.

|                     |    |
|---------------------|----|
| Louna 1 storey..... | 44 |
| Louna 2 storey..... | 46 |
| Serenata.....       | 48 |
| Kuja.....           | 50 |
| Kunnas.....         | 52 |
| Ajatonta.....       | 54 |
| Kevät.....          | 56 |
| Syksy.....          | 58 |
| Soihthu.....        | 60 |
| Heijastus.....      | 62 |
| Syli.....           | 64 |





# LOUNA 1 STOREY



## LOUNA 1 STOREY

Lounatuuli represents New England style architecture, adding a touch of the seaside even to the most urban settings.

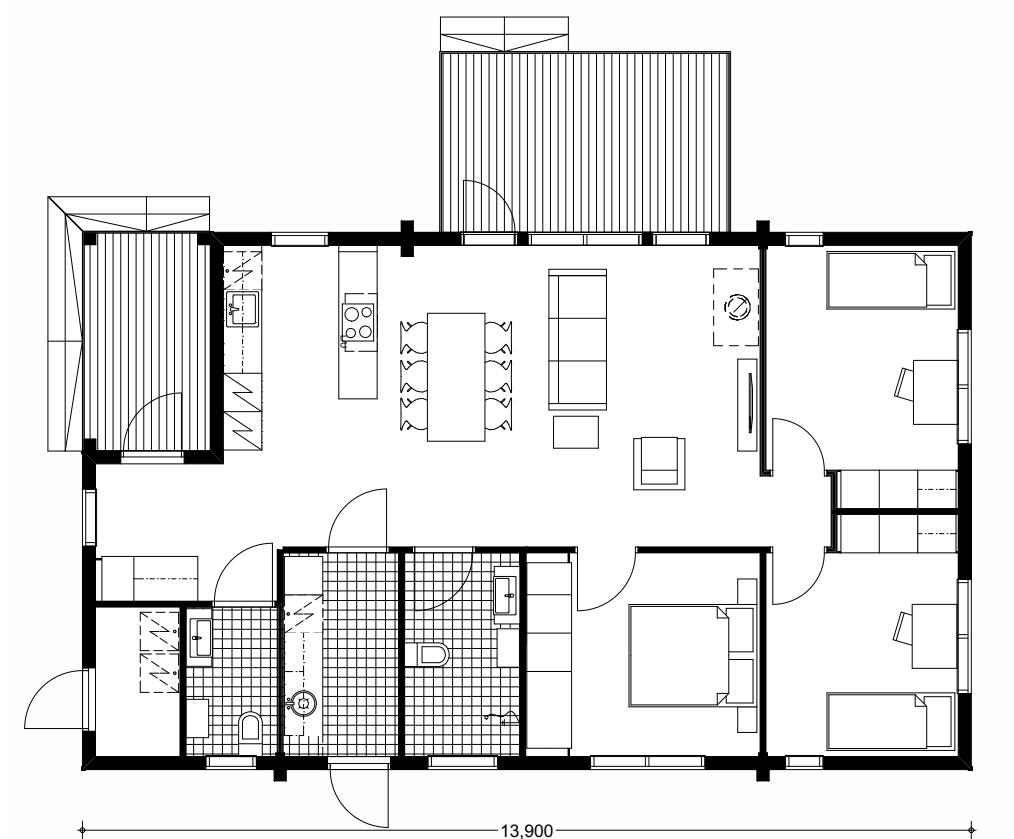
The shape of the house is classic, but the minimalistic architectural details and big windows make it modern. The one-storey model has floor-to-ceiling windows in the living room and the master bedroom, letting the daylight in beautifully.

The walk-in clothes cupboard and the utility room make everyday life smoother. The Lounatuuli collection features houses of different sizes, including one and a half and two storey models.

### CUSTOMISE THIS DESIGN

The designs are available in a range of sizes and layouts that can be adjusted according to your individual needs. See more on

**[www.honka.com](http://www.honka.com)**



**LOUNA**  
LIVING AREA 101 m<sup>2</sup>  
TERRACES 20 m<sup>2</sup>  
TOTAL AREA 121 m<sup>2</sup>  
Doc id: 24263



# LOUNA 2 STOREY



## LOUNA 2 STOREY

The two-storey Lounatuuli design features a light-filled and space-efficient layout. The kitchen, dining area and living area, located on the ground floor, are infused with light, thanks to the large windows. If desired, the bay window upstairs can be made into an additional room. The high-ceilinged upstairs living area is wonderfully light, thanks to the floor-to-ceiling windows. Open up the French doors and bring the gentle summer breeze into your home.

The non-settling Honka Fusion logs lend Lounatuuli an up-to-date, contemporary look. The windows have been designed to sit neatly between the logs and, overall, the design has a well thought out finish, characterised by its thorough attention to detail.

### CUSTOMISE THIS DESIGN

The designs are available in a range of sizes and layouts that can be adjusted according to your individual needs. See more on

[www.honka.com](http://www.honka.com)

### LOUNA

LIVING AREA 164 m<sup>2</sup>

TERRACES 19 m<sup>2</sup>

TOTAL AREA 1?? m<sup>2</sup>

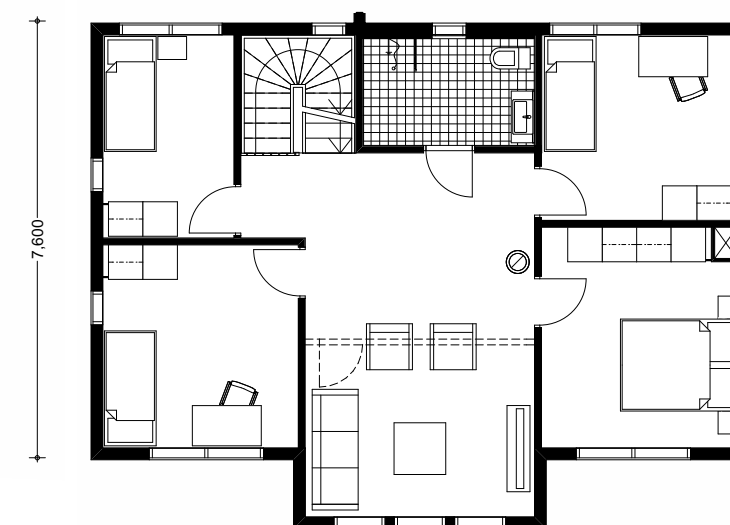
Doc id: 24598



GROUND FLOOR



FIRST FLOOR





# SERENATA



## SERENATA

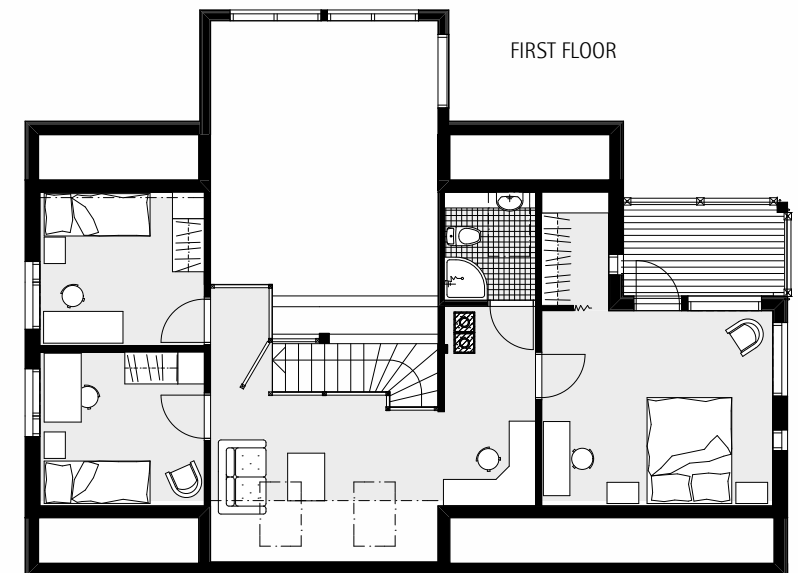
The Serenata house is a popular, traditional log home with classic log house windows.

This model is the epitome of open plan living with the vast ground floor space and vaulted ceilings that really show off the fully glazed feature gable.

There are three generous bedrooms on the first floor and with a large study downstairs there is the option for a fourth bedroom.



**SERENATA**  
LIVING AREA 184 m<sup>2</sup>  
TERRACES 19 m<sup>2</sup>  
TOTAL AREA 203 m<sup>2</sup>  
Doc id: 24603



### CUSTOMISE THIS DESIGN

The designs are available in a range of sizes and layouts that can be adjusted according to your individual needs. See more on

[www.honka.com](http://www.honka.com)





# KUJA



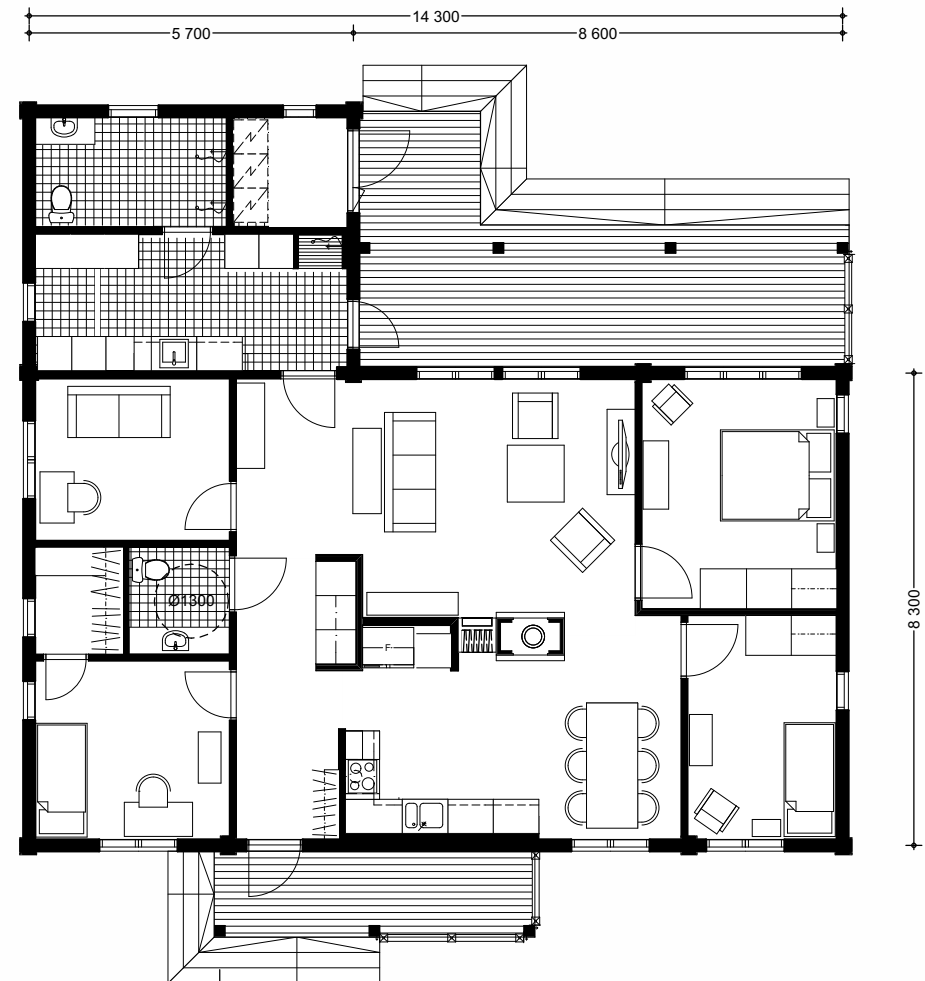
## KUJA

The Kuja design offers a timeless cosiness with a contemporary twist. The classic architectural features of the exterior are reflected in the interior, with the massive wood walls lending the space a warm and natural feel. In the single-storey design, the kitchen and living space forms the heart of the family home, with the bedrooms, bathroom and utility spaces clustered around it.

### CUSTOMISE THIS DESIGN

The designs are available in a range of sizes and layouts that can be adjusted according to your individual needs. See more on

[www.honka.com](http://www.honka.com)



**KUJA**  
LIVING AREA 150 m<sup>2</sup>  
TERRACES 34 m<sup>2</sup>  
TOTAL AREA 184 m<sup>2</sup>  
Doc id: 24605



# KUNNAS



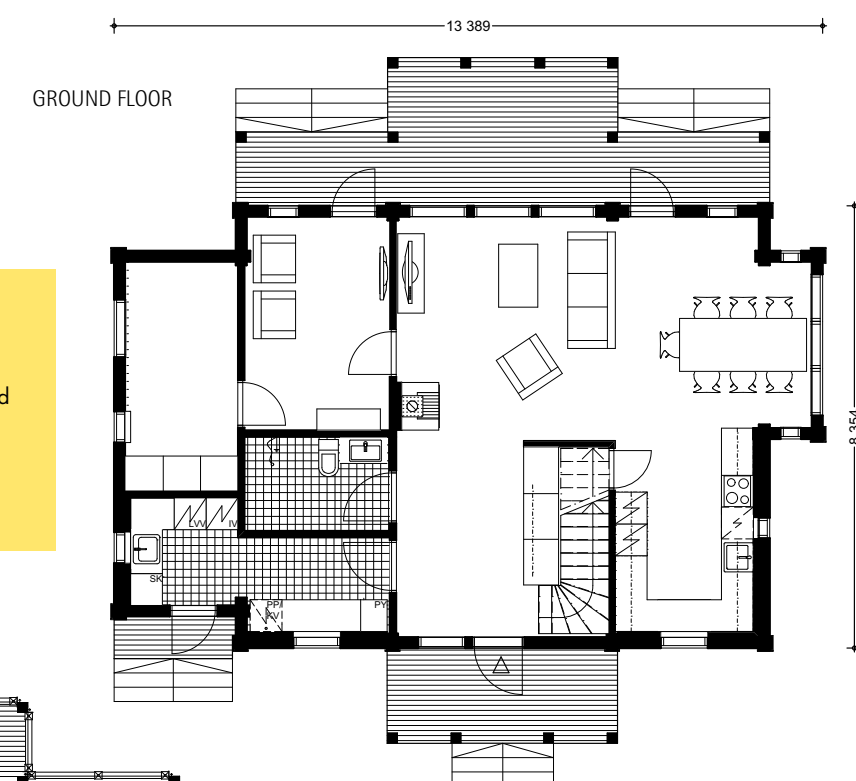
## KUNNAS

Who hasn't dreamed of an imposing yet cosy detached home that offers peace, seclusion and plenty of space? Honka Kunnas is a stunning home with a traditional look, featuring an impressive pillared entrance that gives it a wonderfully distinguished feel. The dining area can be found in an atmospheric bay-windowed space. The bedrooms are upstairs and open onto a wonderfully light shared living space giving access to a balcony.

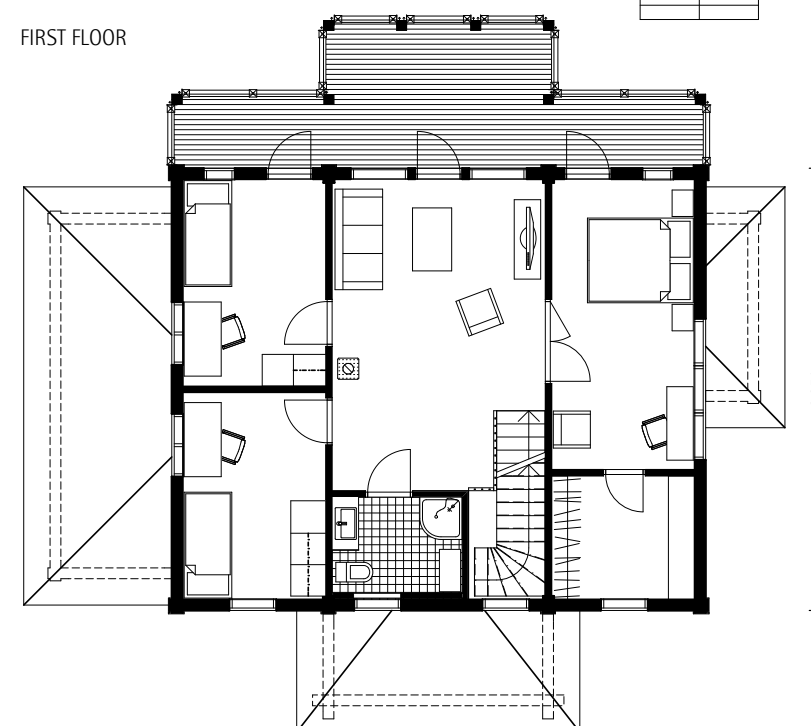
### CUSTOMISE THIS DESIGN

The designs are available in a range of sizes and layouts that can be adjusted according to your individual needs. See more on

[www.honka.com](http://www.honka.com)



FIRST FLOOR



### KUNNAS

LIVING AREA 166,5 m<sup>2</sup>

TERRACES 41 m<sup>2</sup>

TOTAL AREA 207,5 m<sup>2</sup>

Doc id: 24607







AJATONTA

HONKA  
TRADITIONAL

## AJATONTA

Ajatonta has long been one of our most popular houses.

Inspired by early 20th-century villas, this beautiful home is characterised by the handsome bay window that lights up the living room.

Ample daylight, balconies and terraces set the mood of this classic home that appeals to all generations.

The Ajaton collection is originally designed by architect Alexey Skoldinov.

### CUSTOMISE THIS DESIGN

The designs are available in a range of sizes and layouts that can be adjusted according to your individual needs. See more on

**[www.honka.com](http://www.honka.com)**

### AJATONTA

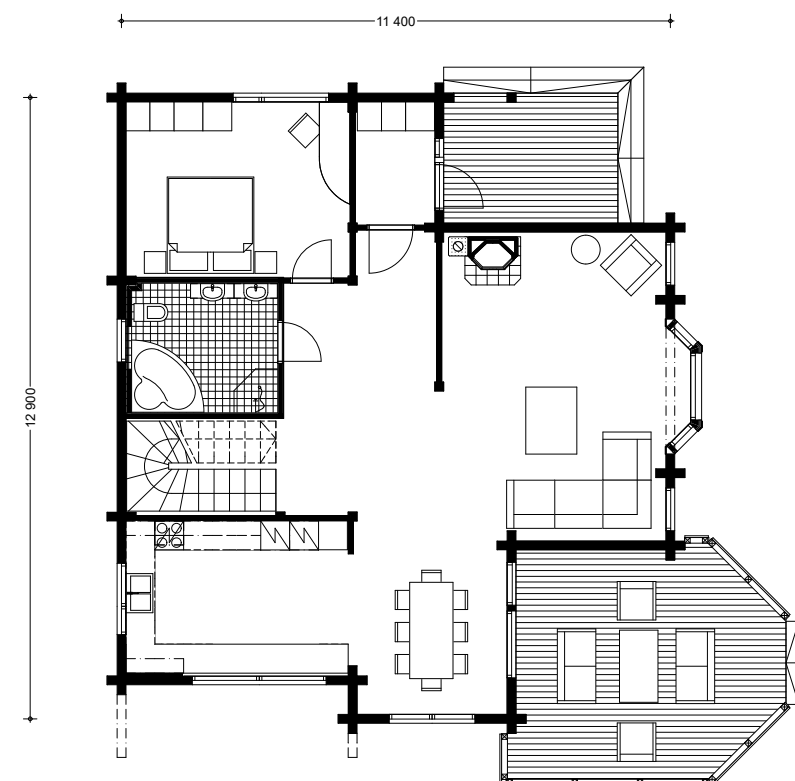
LIVING AREA 206 m<sup>2</sup>

TERRACES 40 m<sup>2</sup>

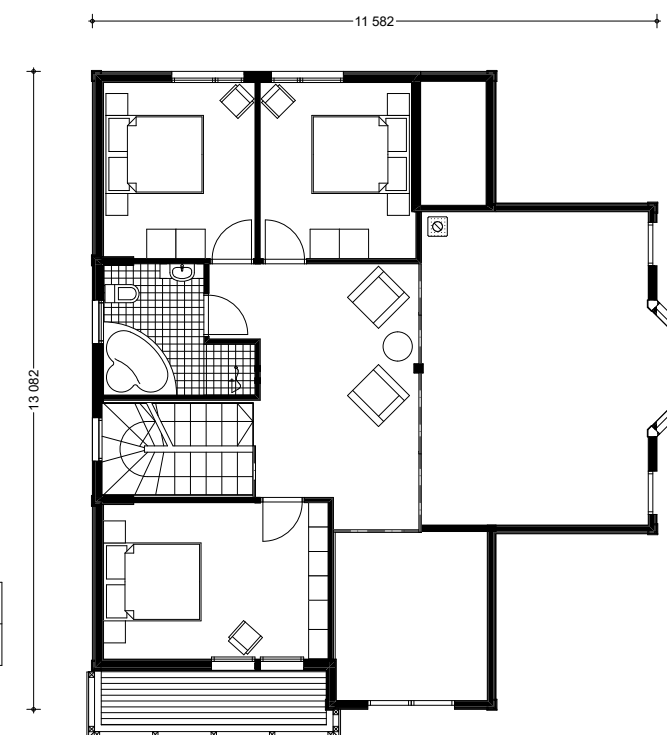
TOTAL AREA 246 m<sup>2</sup>

Doc id: 24608

GROUND FLOOR



FIRST FLOOR





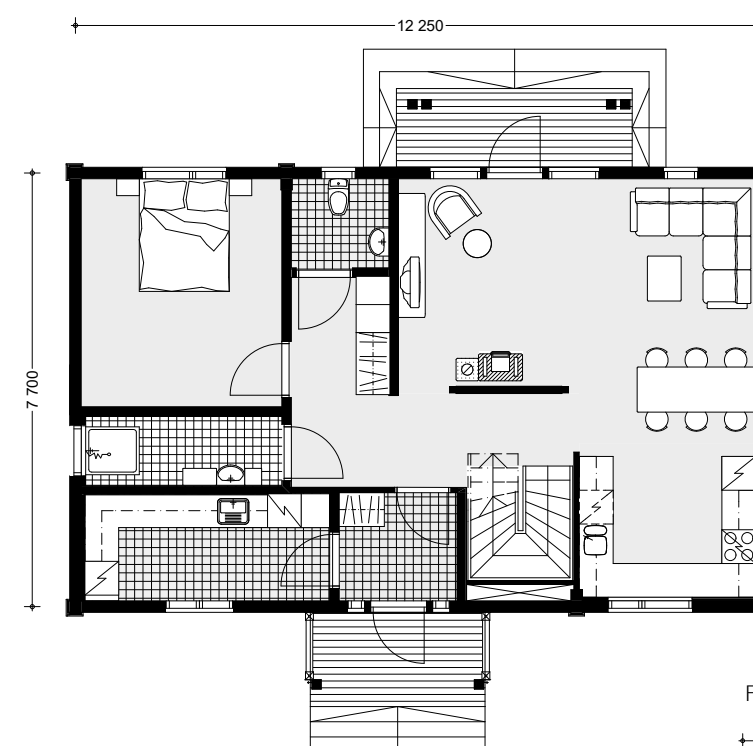
## KEVÄT



## KEVÄT

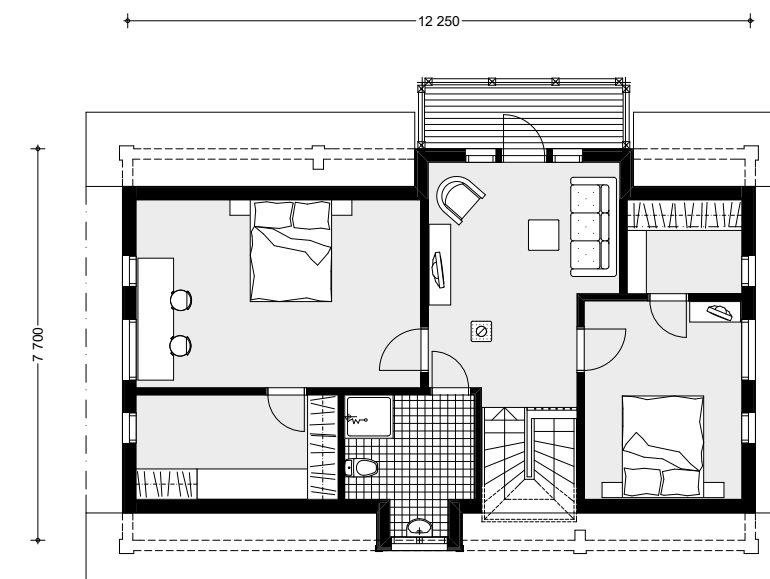
Kevät is a timeless and compact two-storey log home. The downstairs comprises a kitchen, living area, office and utility room, while the upstairs features four bedrooms. This design is imbued with all the charm and character of a traditional log house.

## GROUND FLOOR



**KEVÄT**  
LIVING AREA 160 m<sup>2</sup>  
TERRACES 18 m<sup>2</sup>  
TOTAL AREA 178 m<sup>2</sup>  
Doc id: 24609

## FIRST FLOOR



## CUSTOMISE THIS DESIGN

The designs are available in a range of sizes and layouts that can be adjusted according to your individual needs. See more on

**www.honka.com**





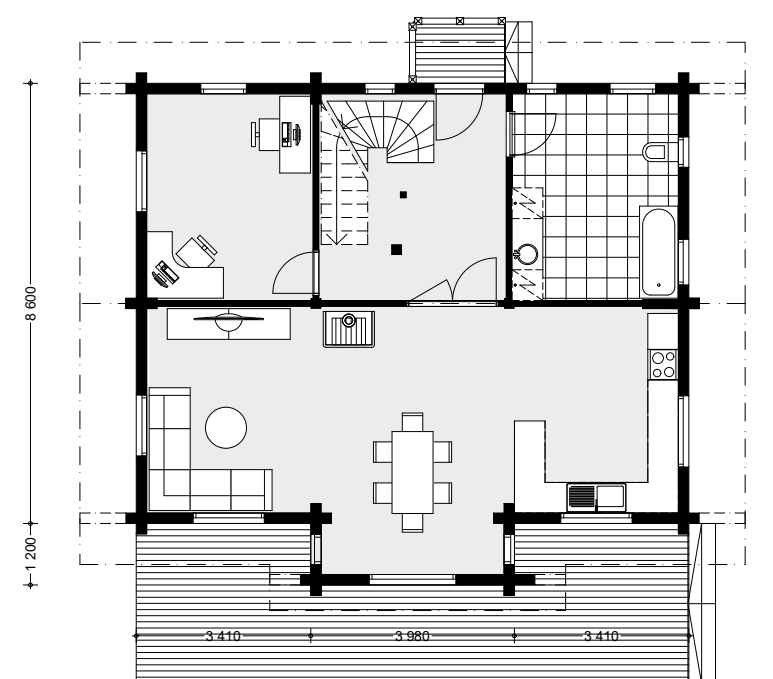
# SYKSY



## SYKSY

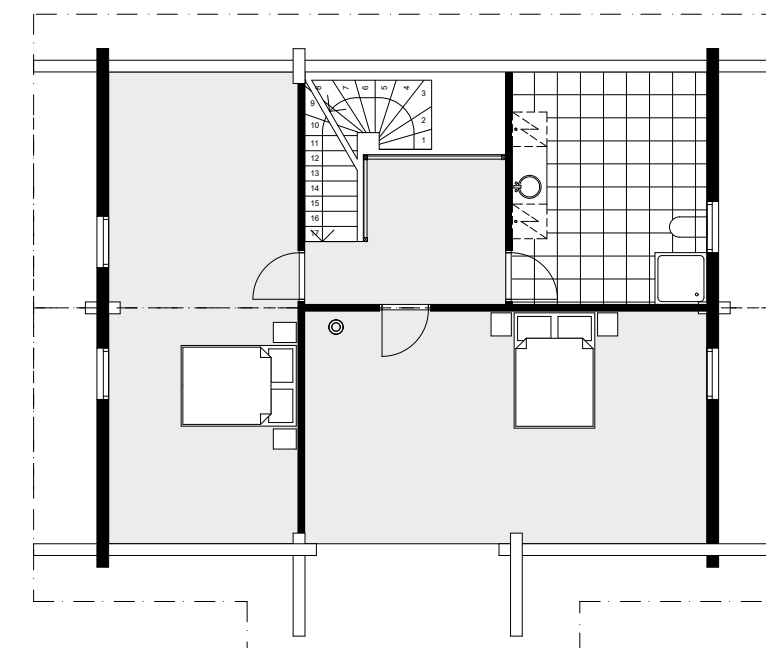
Syksy is a two-storey home with a well-designed layout and a wonderful feature bay window. The first floor offers enough space to accommodate between three and four bedrooms along with a truly luxurious bathroom. The dining area is located downstairs, adjacent to the kitchen, in an atmospheric feature bay window.

### GROUND FLOOR



**SYKSY**  
LIVING AREA 166 m<sup>2</sup>  
TERRACES 31 m<sup>2</sup>  
TOTAL AREA 197 m<sup>2</sup>  
Doc id: 24610

### FIRST FLOOR



### CUSTOMISE THIS DESIGN

The designs are available in a range of sizes and layouts that can be adjusted according to your individual needs. See more on [www.honka.com](http://www.honka.com)







SOIHTU

HONKA  
TRADITIONAL

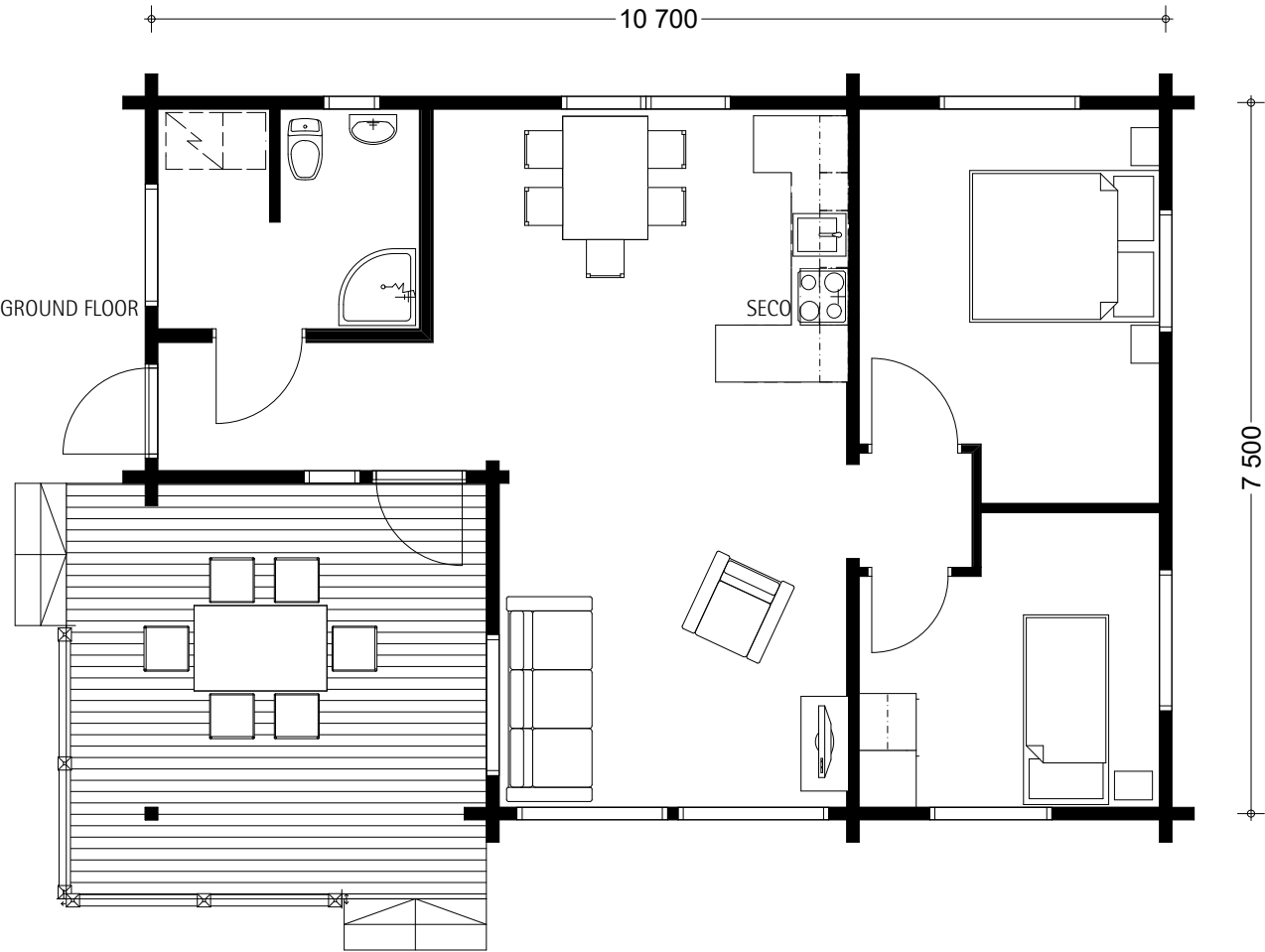
## SOIHTU

SoihTU's large yet cosy windows flood the living and dining space with a wonderful natural light. The roof design allows for larger windows and lends SoihTU its distinctive appearance. The porch area can be glazed, so that you can enjoy the outdoor living season for that little bit longer. SoihTU's compact size belies its generous space; the mezzanine platform offers plenty of space for overnight guests.

**CUSTOMISE THIS DESIGN**

The designs are available in a range of sizes and layouts that can be adjusted according to your individual needs. See more on [www.honka.com](http://www.honka.com)

**SOIHTU**  
LIVING AREA 85 m<sup>2</sup>  
TERRACES 19 m<sup>2</sup>  
TOTAL AREA 84 m<sup>2</sup>  
Doc id: 24604







## HEIJASTUS

Heijastus is one of the most popular villas in its range.

The large windows overlook the beautiful natural landscape surrounding the house. The light, spacious living room is the perfect setting for leisure hours, even when it rains. The upstairs loft serves as a convenient accommodation space for guests. The large veranda around the side of the villa provides more living space. If your plot permits, you can also extend the veranda into an open-air terrace.

We have built several versions of this model on different plots and for different needs.

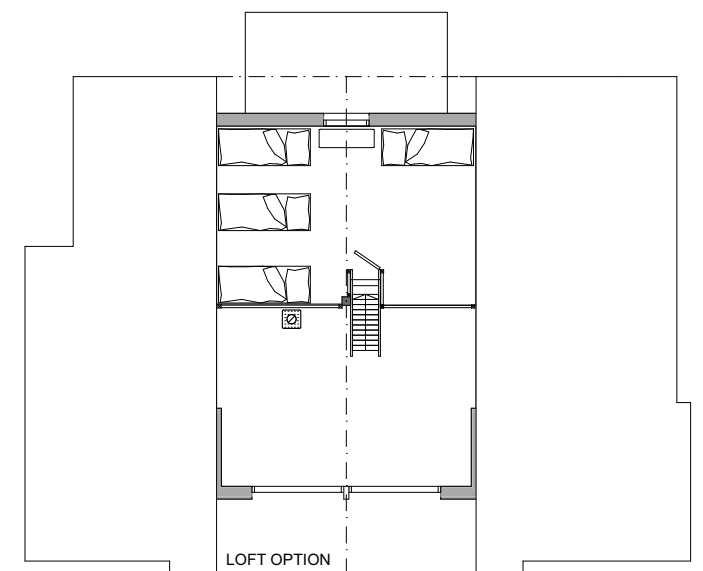
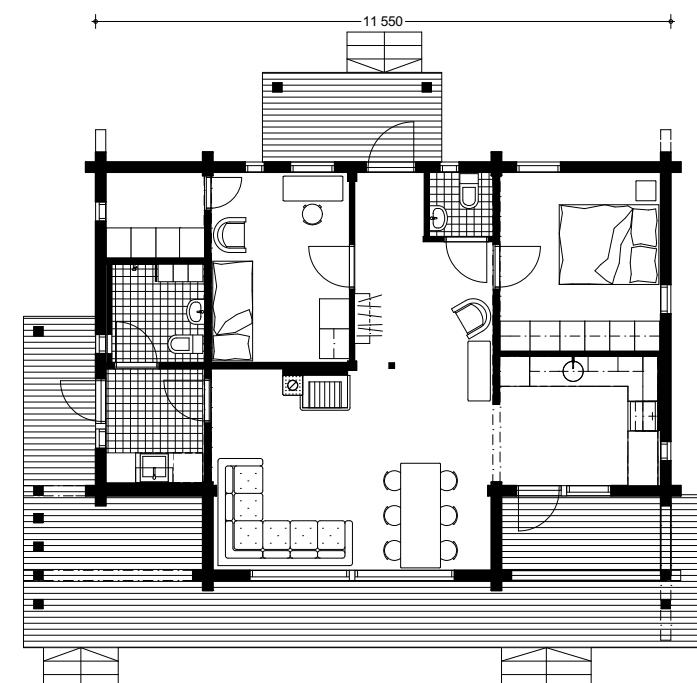
### CUSTOMISE THIS DESIGN

The designs are available in a range of sizes and layouts that can be adjusted according to your individual needs. See more on

**[www.honka.com](http://www.honka.com)**



**HEIJASTUS**  
LIVING AREA 99 m<sup>2</sup>  
TERRACES 43 m<sup>2</sup>  
TOTAL AREA 142 m<sup>2</sup>  
Doc id: 24296





# SYLI



## SYLI

The highly atmospheric Syli villa, with its covered patio and harmonious interior, is the perfect place to leave the rest of the world behind. This holiday home is available in several different versions, ranging from 60 sq m up to 90 sq m. The larger design comes complete with a sauna and a large patio. If desired, you can even add an outdoor fireplace to create the perfect spot to cosy up in, as the nights begin to draw in. Syli was voted Finland's most popular holiday home design in 2014.

### CUSTOMISE THIS DESIGN

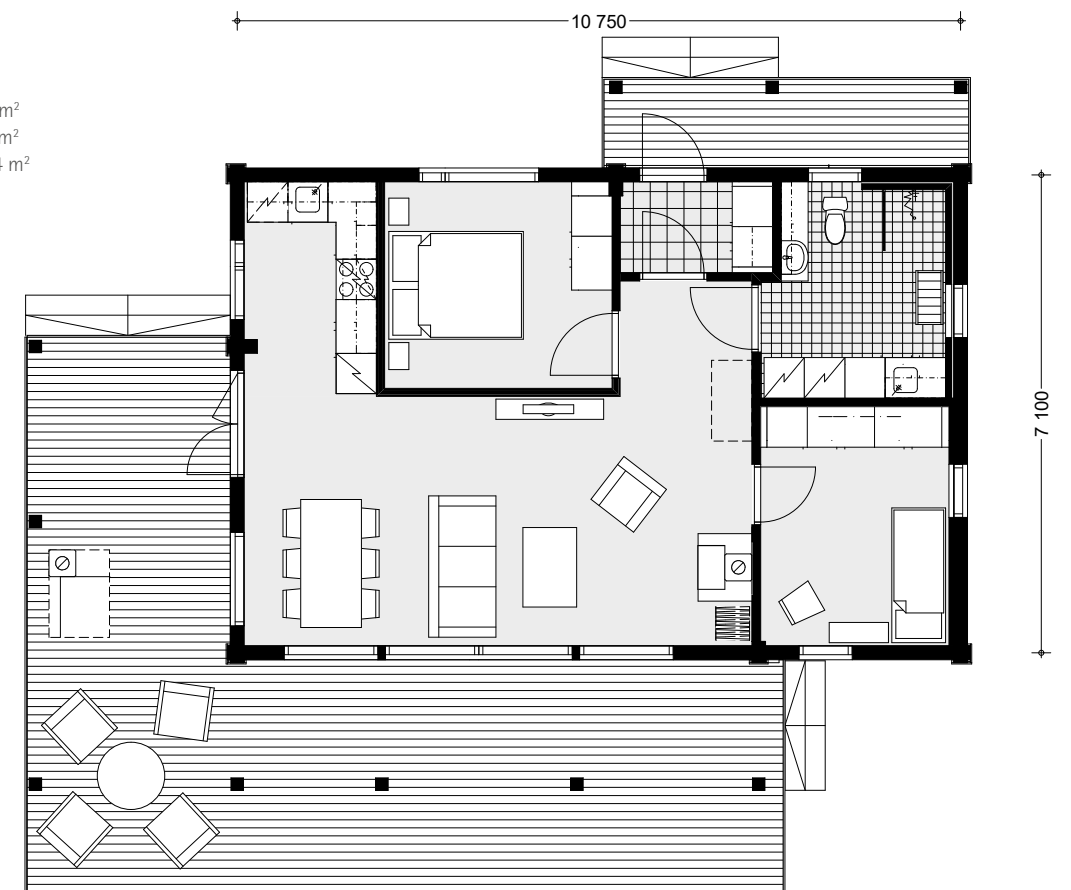
The designs are available in a range of sizes and layouts that can be adjusted according to your individual needs. See more on

[www.honka.com](http://www.honka.com)



### SYLI

LIVING AREA 73 m<sup>2</sup>  
TERRACES 61 m<sup>2</sup>  
TOTAL AREA 134 m<sup>2</sup>  
Doc id: 24611





## ■ RESORT COLLECTION

What is your ideal place for relaxing? Is it the serenity of the seaside, the calm of the countryside or the hustle and bustle of a ski resort? Whether your dream is to build a holiday home for rental use, a small log cabin in the woods or an entire resort village – Honka has the perfect solution for you.

The round log is the solution for those who embrace the traditional log cabin look. However, Honka logs can be used to create highly sophisticated contemporary designs as well. For example, the non-settling Honka Fusion log lends itself particularly well to a variety of designs with big panoramic windows, offering breathtaking views of the surrounding landscape.

All of the houses in our collection can be adjusted to your individual needs. We can also design a unique home based on your needs and the specific characteristics of your plot. The main inspiration during the design process is cosiness and functionality – after all, a holiday home is meant to be a haven of relaxation.

Together with our global partner network, we carry out building projects for log homes and entire holiday resorts all over the world. Contact us, we would be delighted to assist you.





## ■ CUSTOM LOG HOMES

Custom log homes are becoming incredibly popular. More and more people are realising their dream of living in a log home that has been designed for them, with their lifestyle being of particular importance.

The first step in all of our house design services is to work with you to assess your needs and wishes and the location of your new home. The experienced designers in our global co-operation network will be able to guide and advise you through the whole process offering advice and technical expertise to enable you to make informed choices.

Once you are happy with the plans, we complete the blueprints, the building and wall plans and the drawings required by the building authorities. Finally, we'll provide the builders with a detailed instruction manual to help ensure that everything goes according to plan.

The Honka Building Service offered by our local partners provides a range of services designed to help you along every step of the building process – from erecting the frame right down to putting the finishing touches on your home's exterior.

Give your local Honka representative a call so we can start planning your dream home today!

More examples of custom  
log homes homes on  
**[www.honka.com](http://www.honka.com)**







## ■ B2B PROJECTS

Log building is not limited to small-scale private buildings. The material is flexible in use and creates the same benefits also for larger and public buildings.

Hotels and restaurants, daycare centers, schools, leisure centers and entire residential areas are some of our most common projects. Regional construction projects have been one of the fastest-growing areas of our operations in recent years.

One of the driving forces behind our success is our extensive service package, which is specifically tailored to each customer and building. The package can include anything from land

use agreements to regional plans to catalogue design. We also offer a wide range of turnkey construction options.

Together with our partner network, we carry out building projects all over the world – from Finland to Russia and Japan to North America.

Read more and see case studies on  
**[www.honka.com](http://www.honka.com)**







## WHY A HONKA HOME?

Honka is a reliable log construction company that has been in the business for nearly 60 years, built 85,000 houses around the world and come up with countless innovations that have changed log construction to its core. We are experts in healthy, safe and ecological construction and we can help you make all your house-related dreams come true.

### WELLBEING

- + Honka homes are breathable and plastic-free with high indoor air quality and structures that have been proven safe.
- + Wood surfaces reduce stress, and good acoustics with ample natural light make Honka homes pleasant to live in.
- + We only use sustainable wood that is sourced from certified Finnish forests.
- + Our operations are certified in accordance with the ISO 14001 environmental standard.

### DESIGN

- + Our collection comprises models by the best designers, and each model can be customised.
- + We also build bespoke detached houses, holiday homes, saunas and large-scale projects, such as day care centres, hospitals and holiday villages.
- + Our innovations, including the non-settling log, allow us to design more contemporary houses alongside traditional log houses, and to combine elements such as stone, steel, brick and glass with massive wood.

### BUILT TO LAST

- + Honka is the world's first industrial log house builder, and it has delivered around 85,000 houses in over 50 countries during its 60-year history.
- + Honka's product testing and innovation ensure high quality during each phase.
- + Honka homes are the most air-tight, humidity, fire and earthquake-proof homes on the market, and they are made from durable Finnish pine.
- + Honka was the first log house builder in the world to receive the CE marking, which guarantees that its products meet all the requirements of ETA (European Technical Approval) in terms of their properties and functioning.
- + Honka also has the ISO 9001 quality certificate.

## POURQUOI UNE MAISON HONKA?

Honka est le premier fabricant mondial de maison en bois massif. Nous avons construit depuis presque 60 ans 85.000 maisons à travers le monde et développé dix innovations qui ont changé le cœur de la construction en bois massif. Nos constructions saines, solides, sûres et écologiques, vous permettent de réaliser la maison de vos rêves.

### BIEN-ÊTRE

- + Montées sans films plastiques, les maisons Honka respirent et garantissent ainsi une qualité d'air intérieure particulièrement saine.
- + Parce que le bois massif diminue le stress, et parce qu'il garantit une bonne acoustique et une lumière naturelle, nos maisons Honka sont très agréables à vivre.
- + Nous utilisons uniquement des bois Finlandais respectant la gestion durable des forêts.
- + Notre production est certifiée conforme à la Norme ISO 14001 environnement.

### DESIGN

- + Notre collection comprend des modèles de grands designers, et chaque maison peut être personnalisée.
- + Nous construisons également des maisons individuelles sur mesure, maisons de vacances, saunas et des projets d'envergure, comme des crèches, hôpitaux et villages vacances.
- + Nos innovations, grâce à l'utilisation de madriers non-tassant, nous permettent de combiner des éléments tels que de larges fenêtres, de l'enduit en façade avec le bois massif, et de dessiner des maisons très modernes comme traditionnelles.

### CONSTRUIT POUR DURER

- + Honka est le premier fabricant mondial de maison en bois massif, et est implanté depuis 60 ans dans plus de 50 pays.
- + Les tests et innovations des produits Honka garantissent une haute qualité à chacune des étapes.
- + Fabriquées à partir du pin Finlandais, les maisons Honka sont les plus étanches à l'air, à l'humidité, au feu et sont antisismiques.
- + Honka a été le premier fabricant mondial à obtenir le marquage CE, garantissant des produits de qualité et conformes à l'ETA (Agrément Technique Européen).
- + Honka est également certifié ISO 9001 (Management de la qualité).





## ¿POR QUÉ UNA CASA HONKA?

Honka es el líder mundial en producción de casas de troncos. Llevamos casi 60 años en esta actividad, 85.000 casas construidas en todo el mundo y hemos creado docenas de innovaciones que han cambiado la construcción con troncos de madera hasta sus últimos detalles. Somos expertos en construcción saludable, segura y ecológica, y podemos ayudarle para que la casa de sus sueños se haga realidad.

### SALUD Y BIENESTAR

- +** Las casas Honka son transpirables y libres de productos químicos, con una gran calidad del aire interior y probada seguridad estructural.
- +** Las superficies de madera reducen el estrés, y la buena acústica sumada a la luminosidad natural hacen que las casas Honka sean muy confortables.
- +** Sólo utilizamos madera proveniente de bosques finlandeses con certificado de gestión sostenible.
- +** Nuestras operaciones están certificadas bajo el estándar medioambiental ISO 14001.

### DISEÑO

- +** Nuestra colección de modelos está realizada por los mejores diseñadores y cada modelo es personalizable.
- +** También construimos casas a medida, casas de vacaciones, saunas y proyectos a gran escala, tales como centros de día, edificios comerciales y urbanizaciones.
- +** Nuestras innovaciones, incluidos los troncos sin asentamiento, nos permiten realizar diseños de arquitectura moderna además de las casas de troncos tradicionales, y combinar elementos como grandes ventanales o revocos con la madera maciza.

### HECHO PARA DURAR

- +** Honka es el primer fabricante de casas de troncos, y ha realizado 85.000 casas construidas en más de 50 países en sus 60 años de historia.
- +** El control de calidad implementado por Honka, más sus innovaciones técnicas, aseguran un producto de alta calidad.
- +** Las casas Honka son las más estancas, mejor protegidas del mercado contra la humedad, el fuego y los seísmos, y están hechas con pino finlandés, de comprobada durabilidad.
- +** Honka es el primer fabricante del mundo en recibir el marcado CE, lo que garantiza que sus productos cumplen con los requisitos de la Aprobación Técnica Europea en propiedades y rendimiento.
- +** Honka también dispone del certificado de calidad ISO 9001.

**Para más información, descarga de folletos, o solicitud de contacto para comentarnos su proyecto, visítenos en [www.honka.es](http://www.honka.es). Estaremos encantados de atenderlo y colaborar para hacer realidad la casa de sus sueños.**



## WARUM EIN HONKA-MASSIVHOLZHAUS?

Vertrauen Sie dem Pionier des Massivholzbbaus, der eine fast 60jährige Geschichte, 85.000 weltweit gebaute Objekte und unterschiedliche Massivholzbau-Innovationen hat. Wir sind die Experten des gesunden, sicheren und ökologischen Baus und können Sie dabei unterstützen, Ihren Hausraum zu verwirklichen – egal welcher Art.

### WOHLFÜHLEN AUS DER NATUR

- +** HONKA-Häuser, die über die bewährten bauphysikalischen Konstruktionen verfügen, sind atmungsaktive und kunststofffreie Häuser mit ausgesprochen gutem Raumklima.
- +** Die Holzflächen mindern den Stress, die gute Akustik und das Maximieren des natürlichen Lichtes in unserer Architektur sind eine Garantie für eine angenehme Wohnumgebung.
- +** Wir benutzen ausschließlich zertifiziertes Holz, das verantwortungsvoll und nachhaltig aus den finnischen Wäldern stammt.
- +** Unsere Produktionsprozesse sind gemäß Umweltnorm ISO 14000 zertifiziert.

### TRADITIONELLES ODER MODERNES DESIGN NACH MASS

- +** Unsere Auswahl stellt sich aus verschiedenen Hausmodellen – von Spitzenarchitekten entworfen – zusammen, wobei jedes Modell änderungsfähig ist.
- +** Wir verwirklichen zudem komplett individuelle Eigenheime, Ferienhäuser, Saunen und auch größere Projekte wie z.B. Hotels, Kindertagesstätten, Krankenhäuser und Freizeitanlagen.

- +** Unsere Innovation, wie z.B. setzungsfreie Holzbalken ermöglichen neben dem traditionellen Holzhaus auch modernes Design und große Fensterflächen, sowie das Kombinieren mit Putz und anderen Materialien.

### LANGLEBIGES HAUS, KEIN WERTVERLUST

- +** HONKA ist der erste industrielle Holzhaushersteller, der während fast 60 Jahren ca. 85.000 Häuser in über 50 Länder geliefert hat
- +** Produktteste und Innovationsarbeit von HONKA sichern die Qualität in jeder Arbeitsphase.
- +** HONKA stellt die dichtesten, feuchtigkeits-, feuer- und erdbebensichersten Heime aus dem Holz der finnischen Kiefer her.
- +** HONKA ist der erste Holzhaushersteller der Welt, deren Produkte die baurechtlich geforderte CE-Kennzeichnung tragen. Die Eigenschaften und Funktionen der Produkte sind gemäß der Europäischen Technischen Zulassung (ETA) und entsprechen dem Eurocode 5.
- +** HONKA trägt ebenfalls die Qualitätszertifizierung nach ISO 9001.



## SAFE DREAMS WITH CERTIFIED SOLUTIONS



Honka was the first European manufacturer of wooden houses to receive the right to mark its houses with the CE certification



The PEFC certification guarantees that the Honka's raw material originates from certified Finnish forests. We never buy wood from protected regions.



Made in Finland



Our operations are certified in accordance with the ISO 14001 environmental standard. Honka also has the ISO 9001 quality certificate.



Pictures in Pinterest:  
[pinterest.com/honkaloghomes](https://pinterest.com/honkaloghomes)



Follow Honka on Facebook:  
[facebook.com/honkaglobal](https://facebook.com/honkaglobal)

Contact your local HONKA dealer  
and find out how living in a log house  
will change your life!

[www.honka.com](http://www.honka.com)



[www.honka.com](http://www.honka.com)